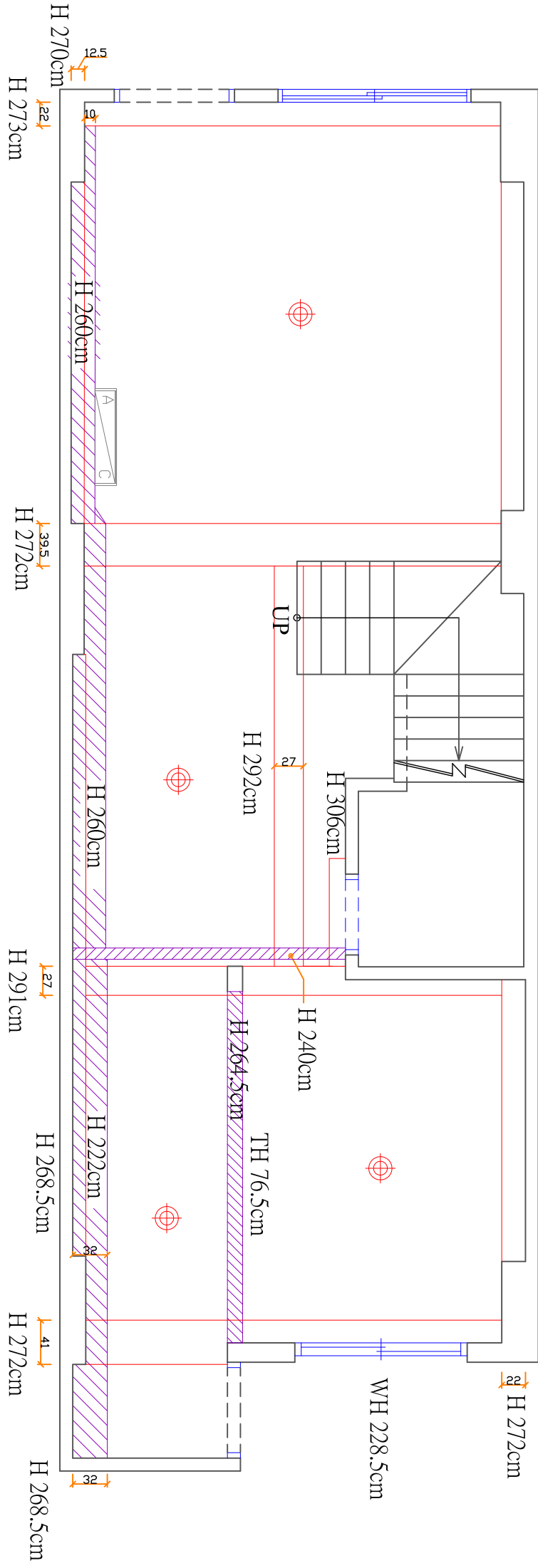


WH 158cm  
TH 77cm

H 272cm



H 270cm

H 273cm

H 260cm

H 272cm

H 260cm

H 291cm

H 268.5cm

H 272cm

H 268.5cm

UP

H 292cm

27

H 306cm

H 240cm

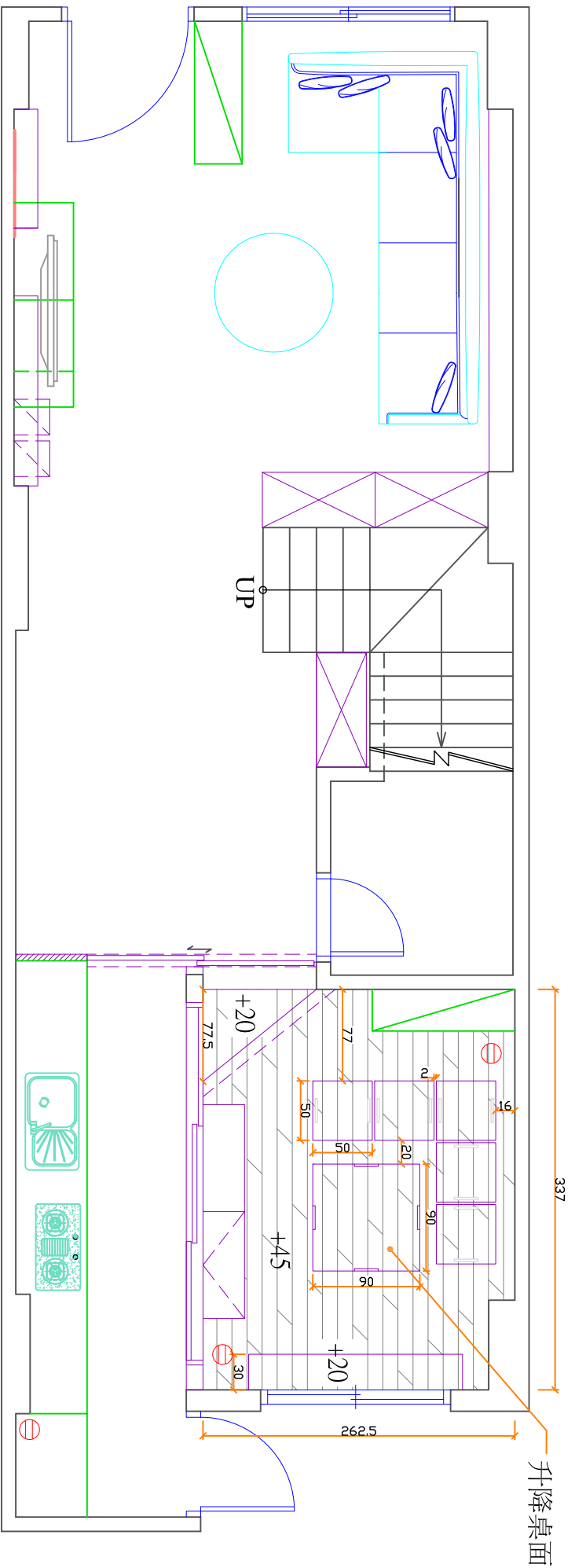
H 264.5cm

TH 76.5cm

WH 228.5cm

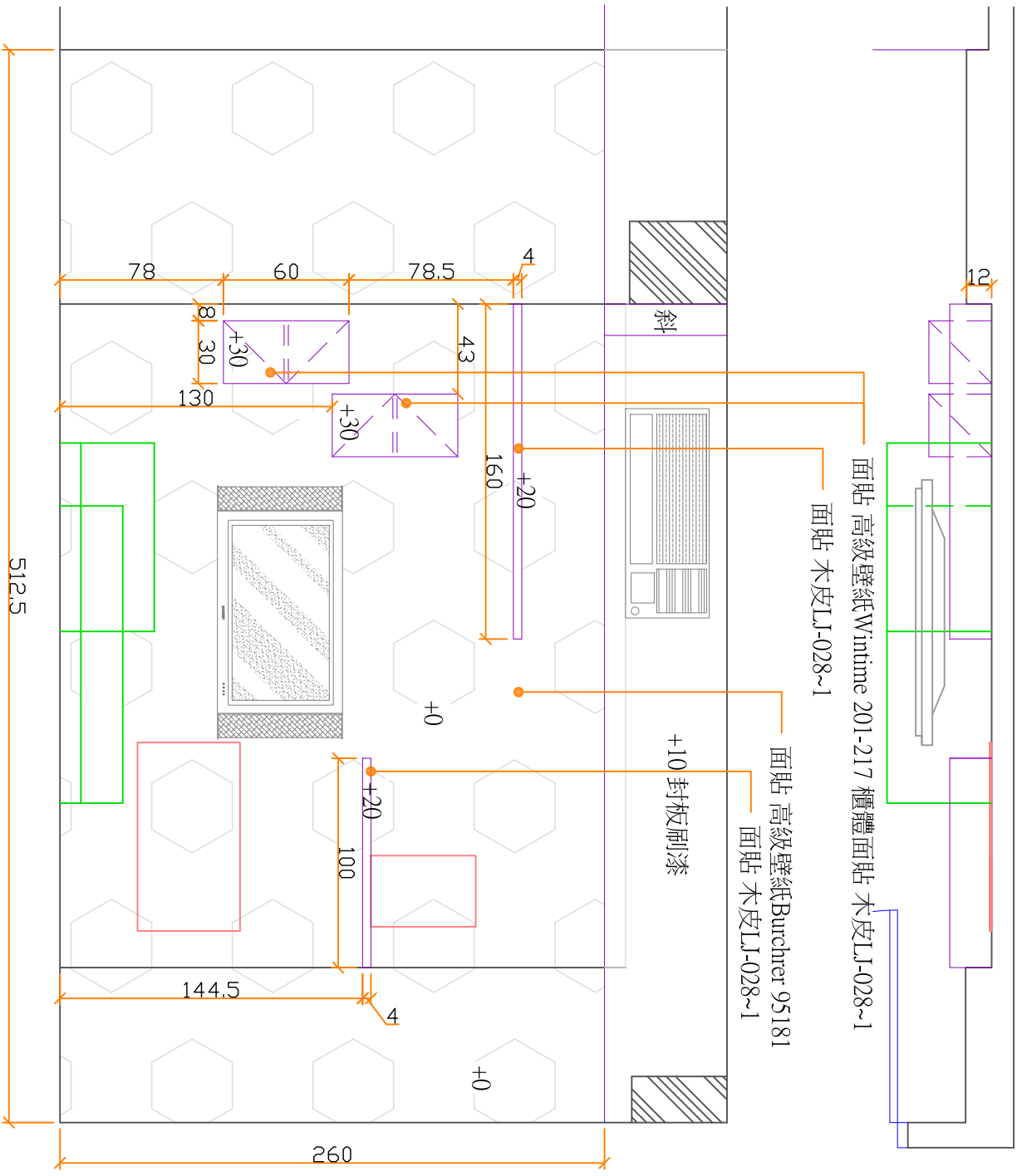
H 272cm

CH 318.5cm  
壹樓天花板圖

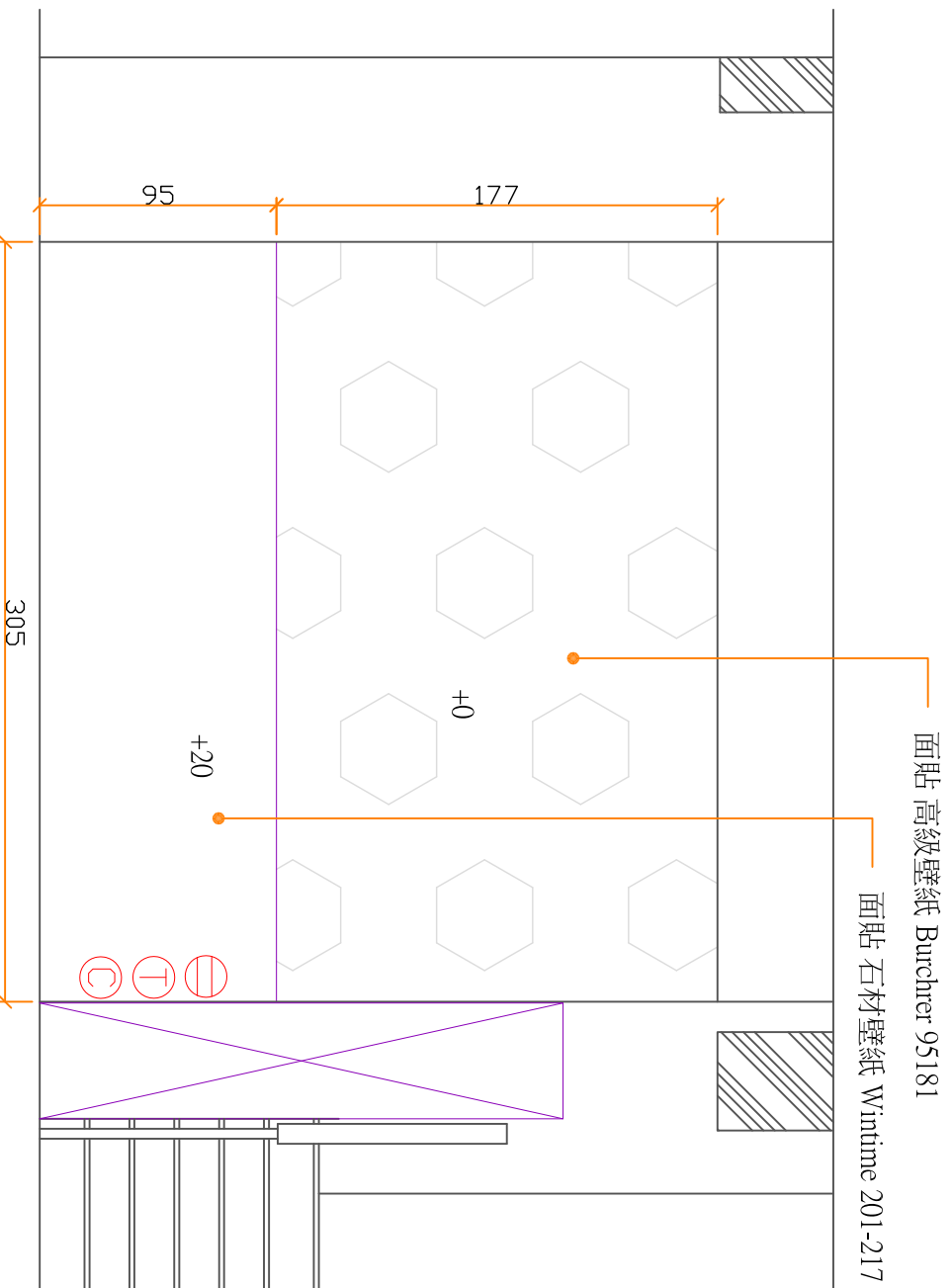
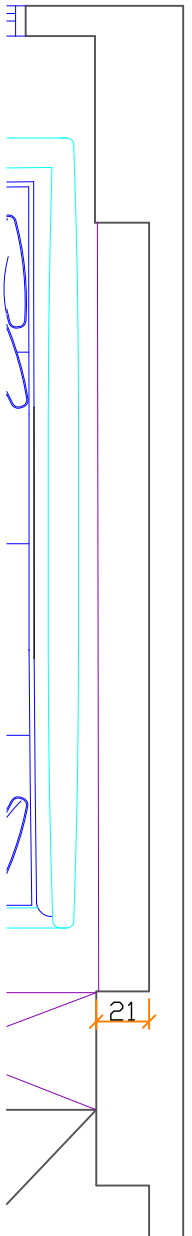


- 超耐磨地板-架高
1. 32北歐松木
  2. 113臻鑽核桃

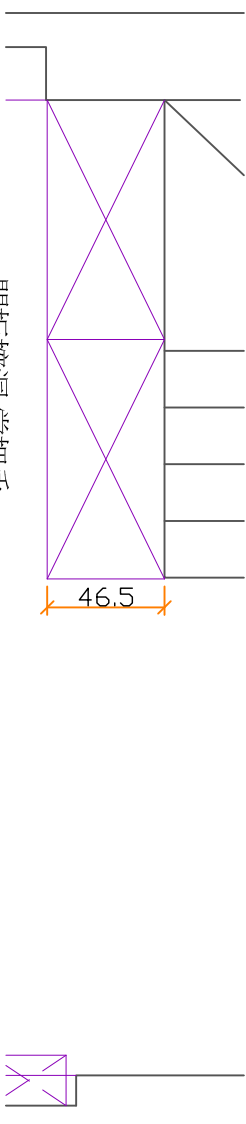
壹樓平面配置圖



客廳電視牆立面圖



沙發背牆立面圖

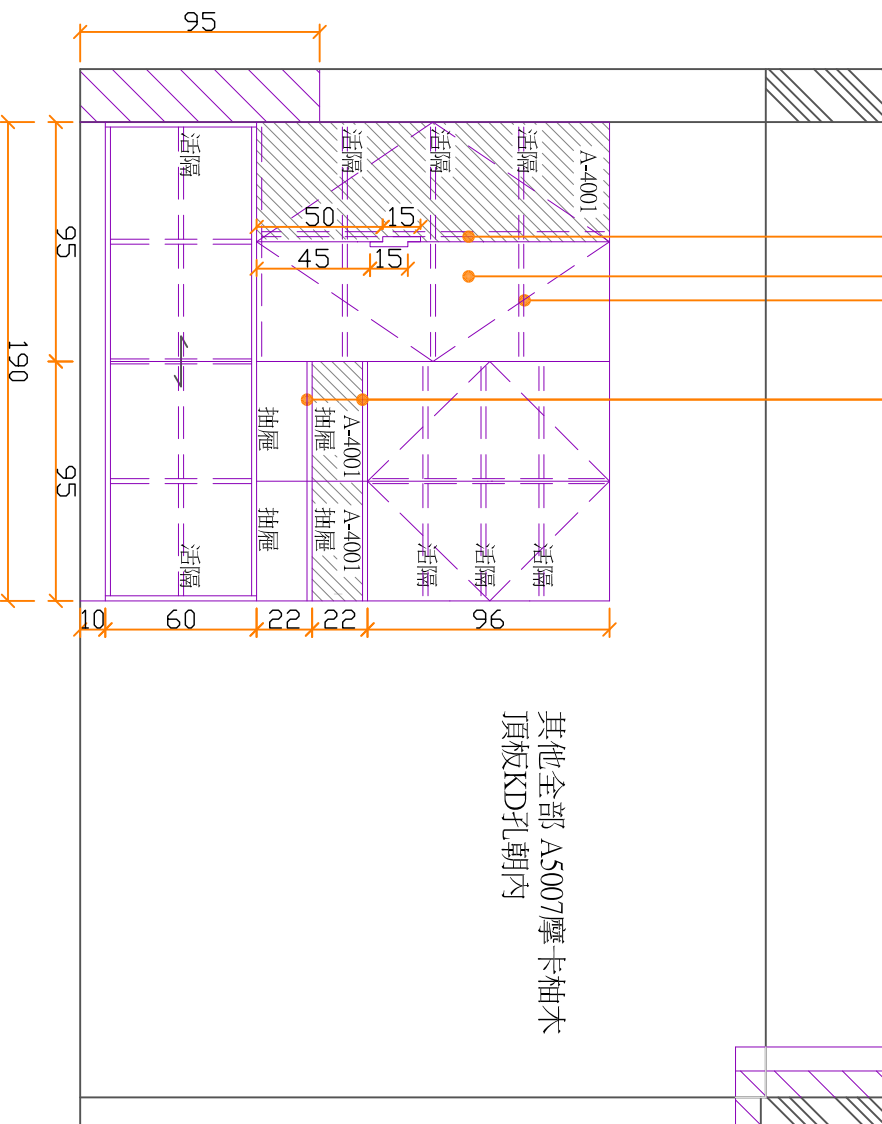


門板挖洞 當把手

美背板

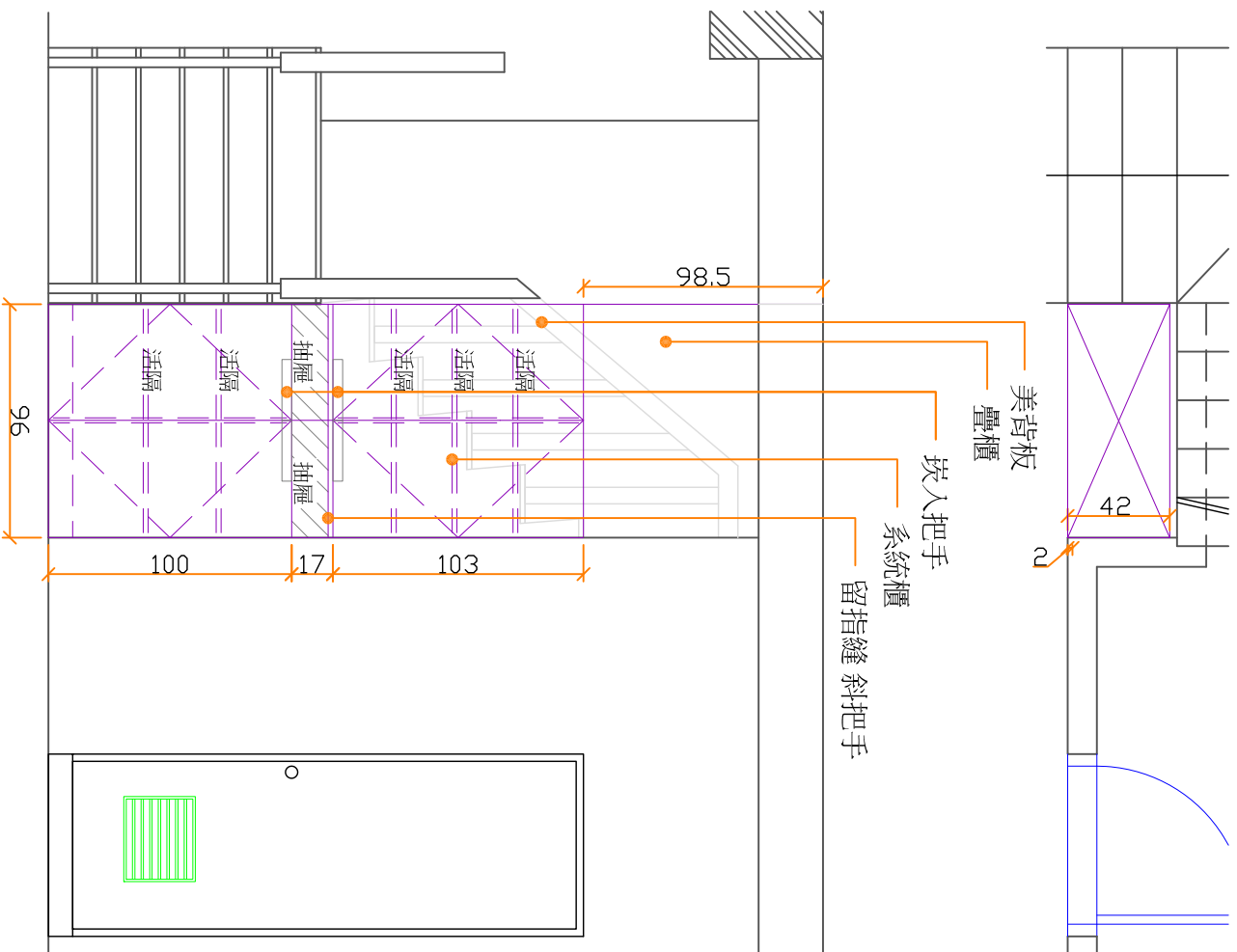
系統櫃

留指縫 斜把手



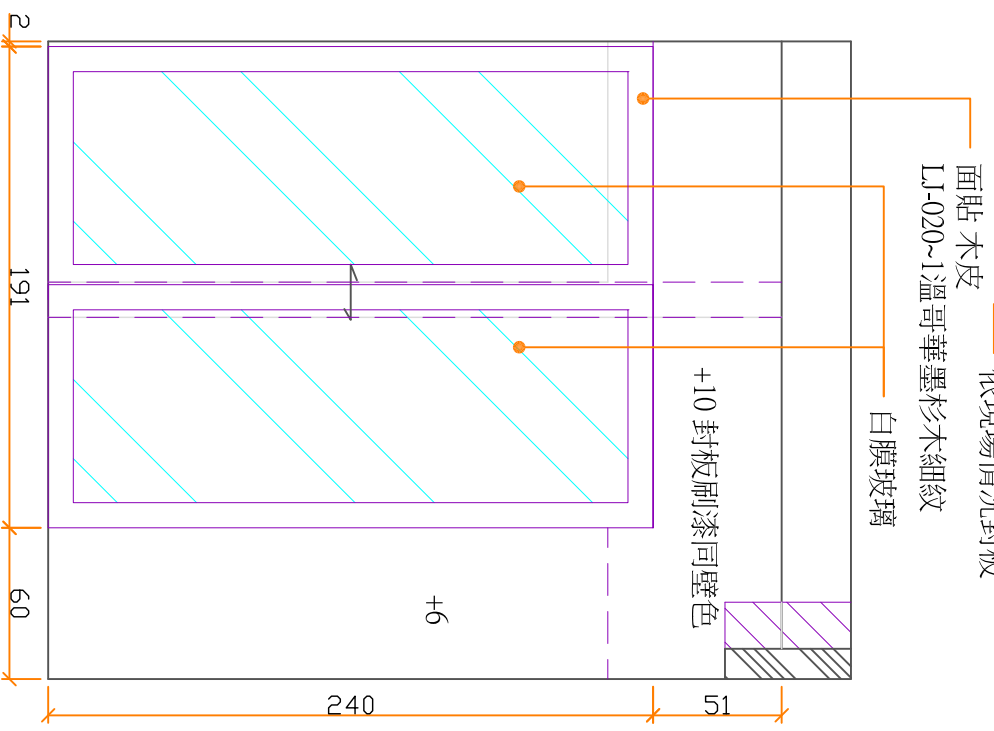
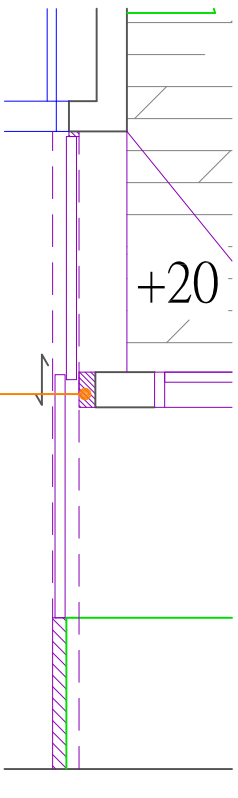
其他全部 A5007摩卡柚木  
頂板KD孔朝內

樓梯邊收納櫃立面圖

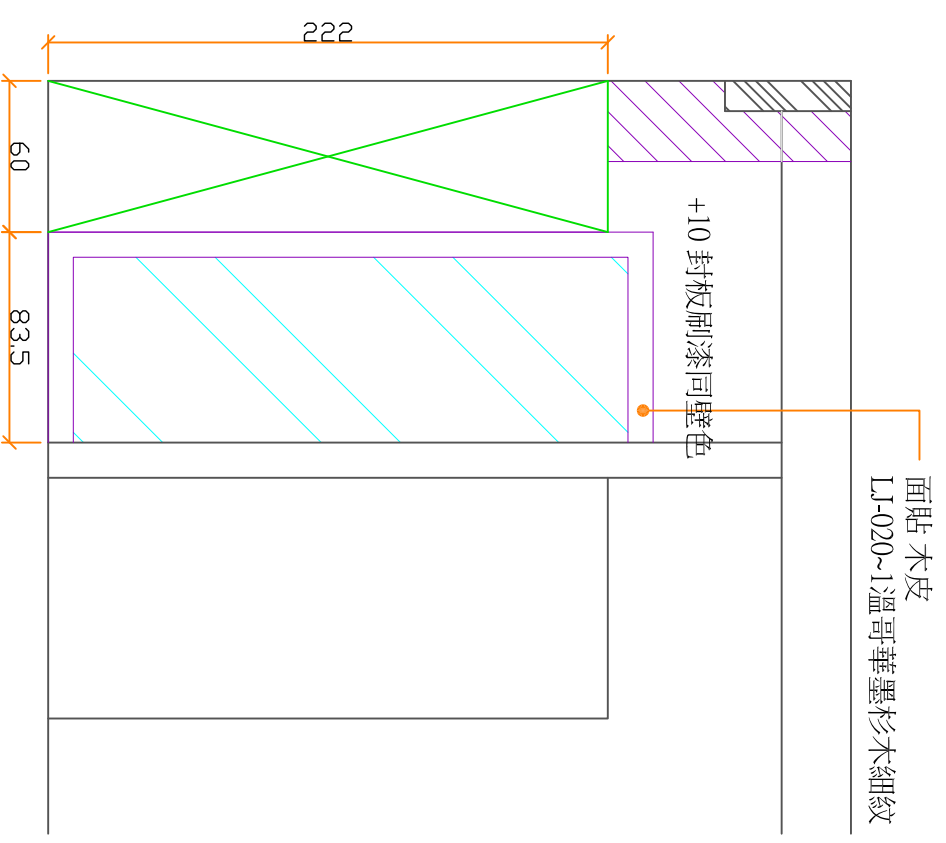
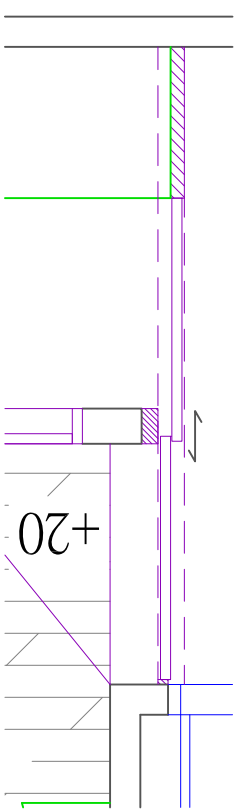


門片 A-5007 摩卡柚木  
 抽頭跳色 A-4001 慕尼黑黑胡桃  
 其他全部 K-500 雪山白  
 門片蓋踢腳  
 頂板KD孔朝內

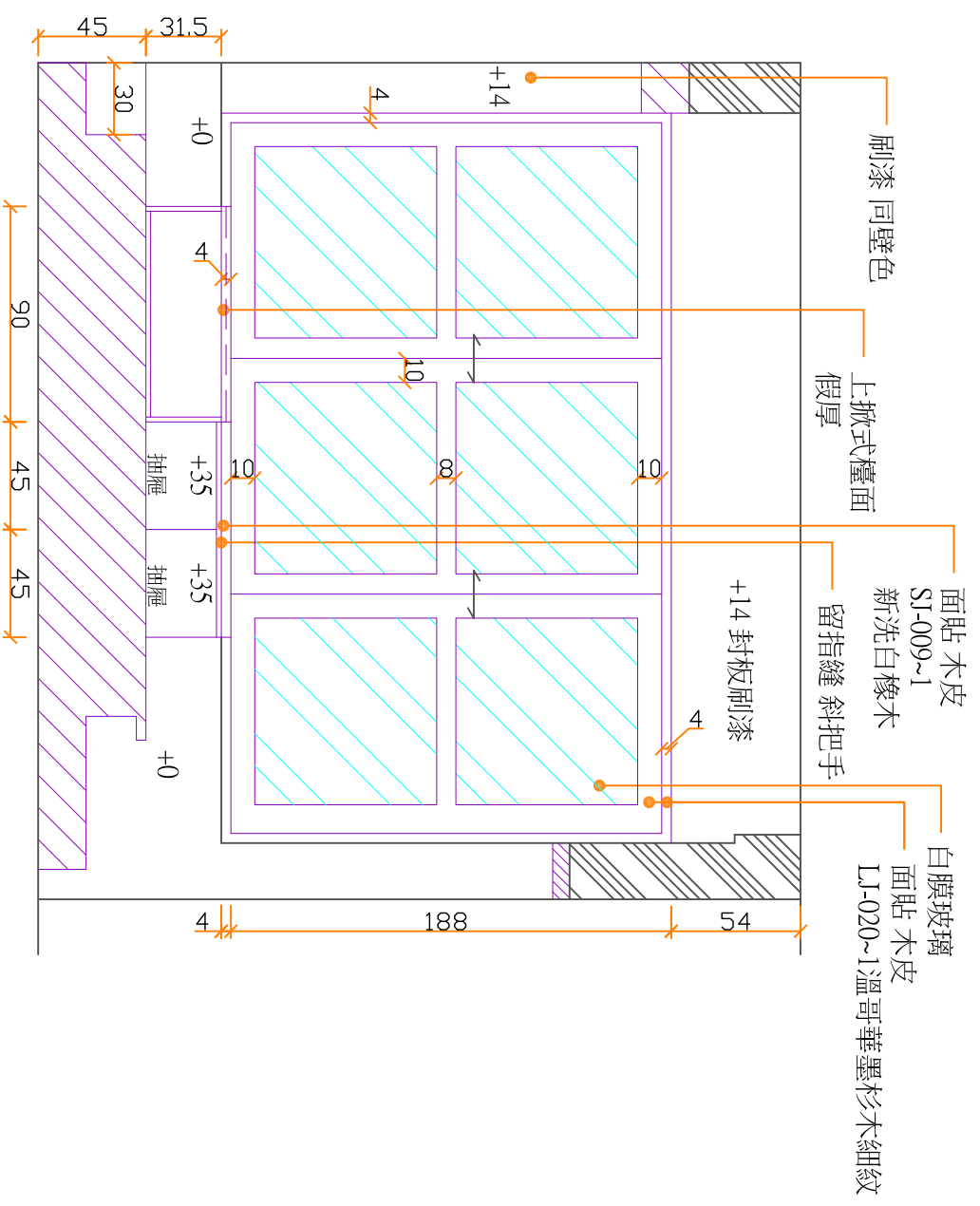
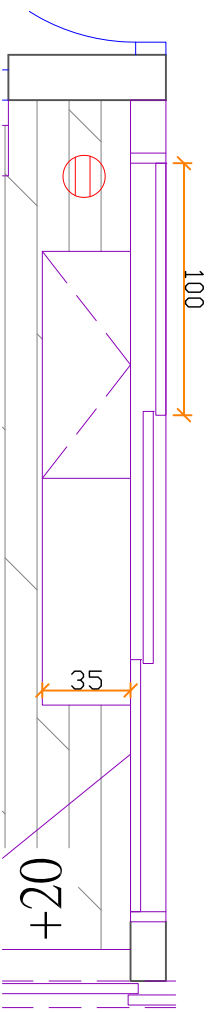
廁所旁收納櫃立面圖



和室及廚房外觀推拉門立面圖

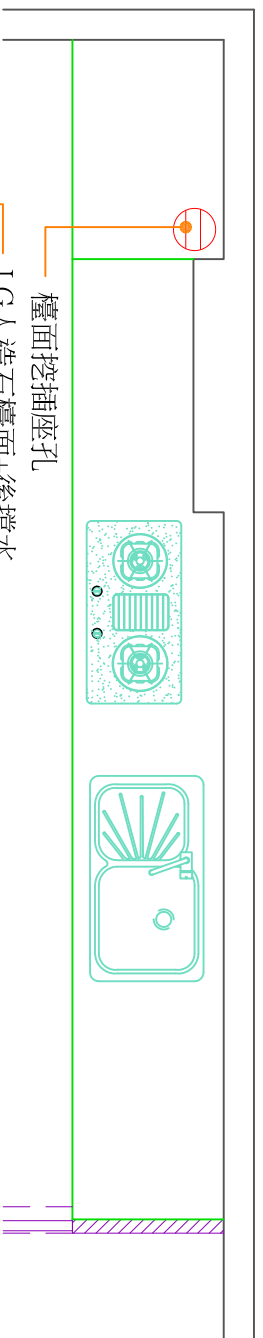


和室及廚房內部推拉門立面圖



和室矮牆推拉門+和室收納櫃立面圖





檯面挖插座孔

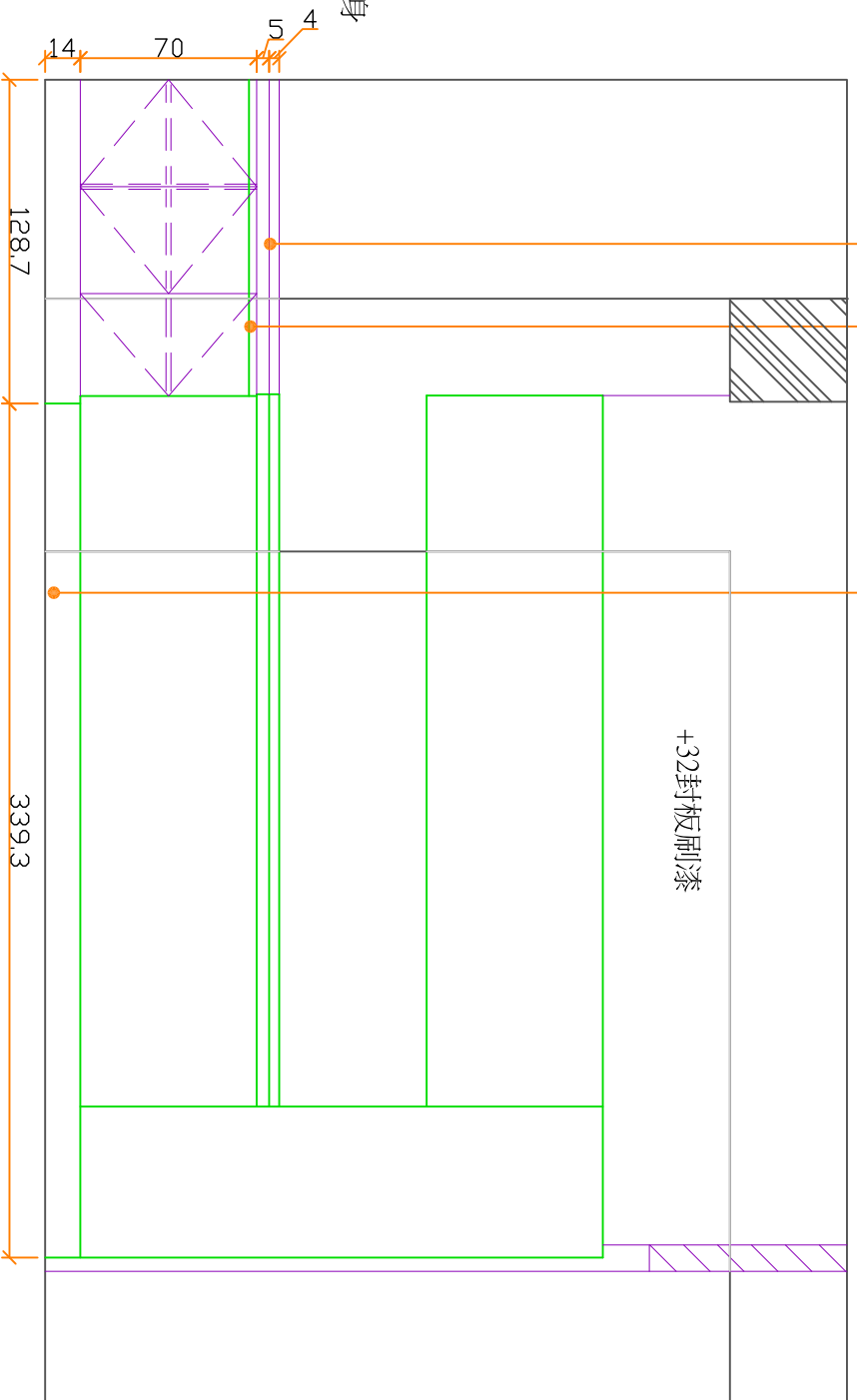
LG人造石檯面+後擋水

C型把手

拆踢腳跑線/重做踢腳板

+32封板刷漆

系統板門片+桶身



和室矮牆推拉門+和室收納櫃立面圖