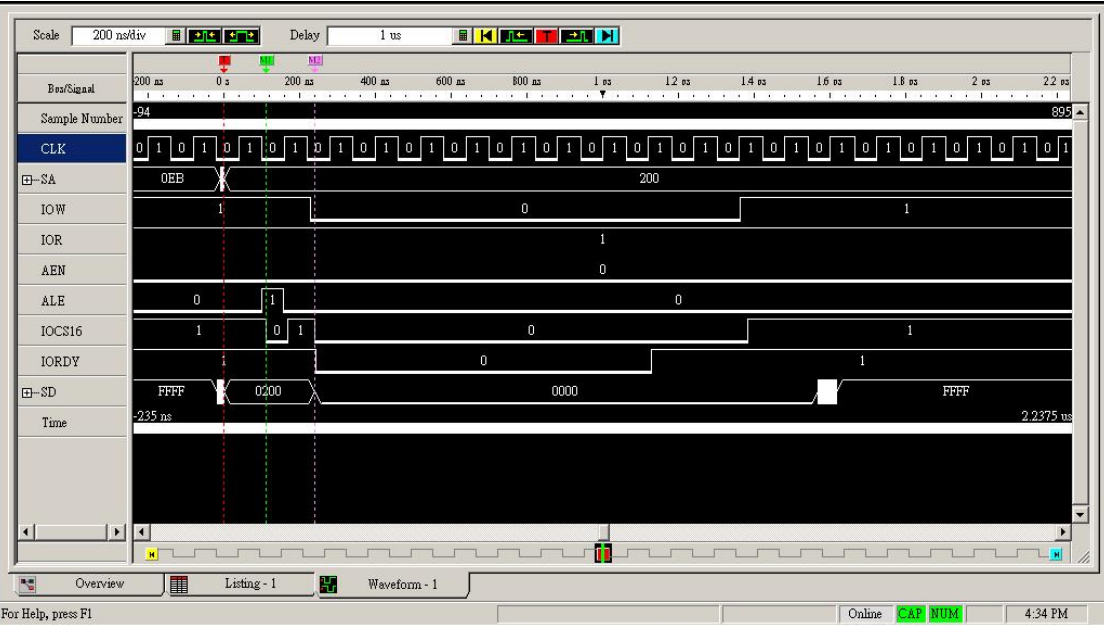


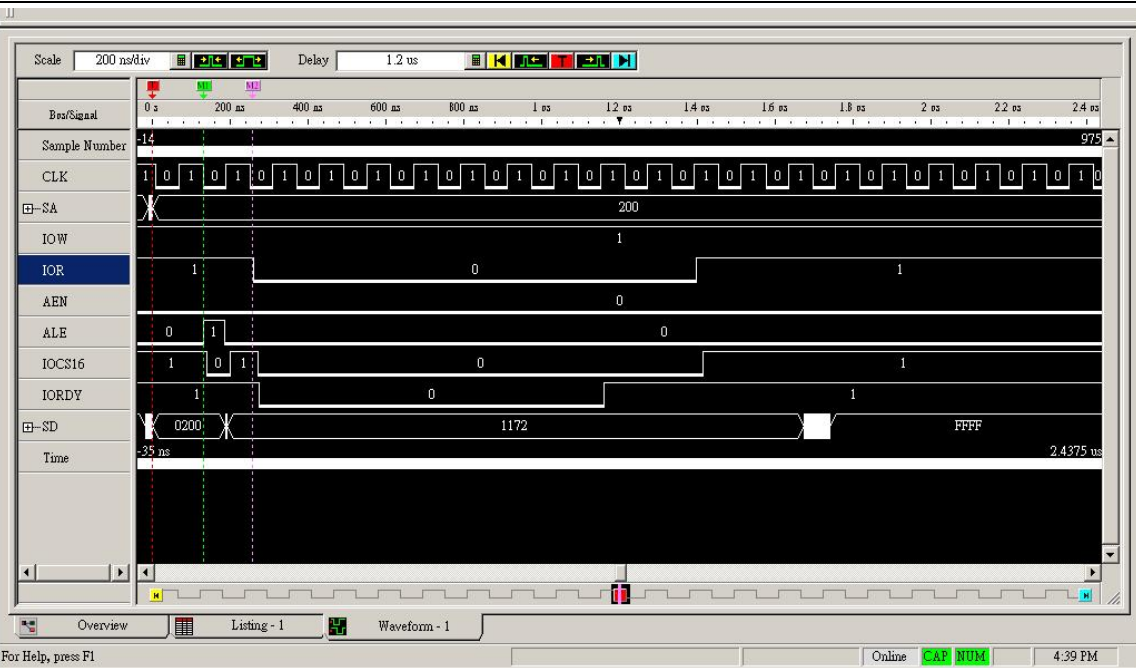
Trigger 條件 SA=0X200

輸出命令 inport(0x200);



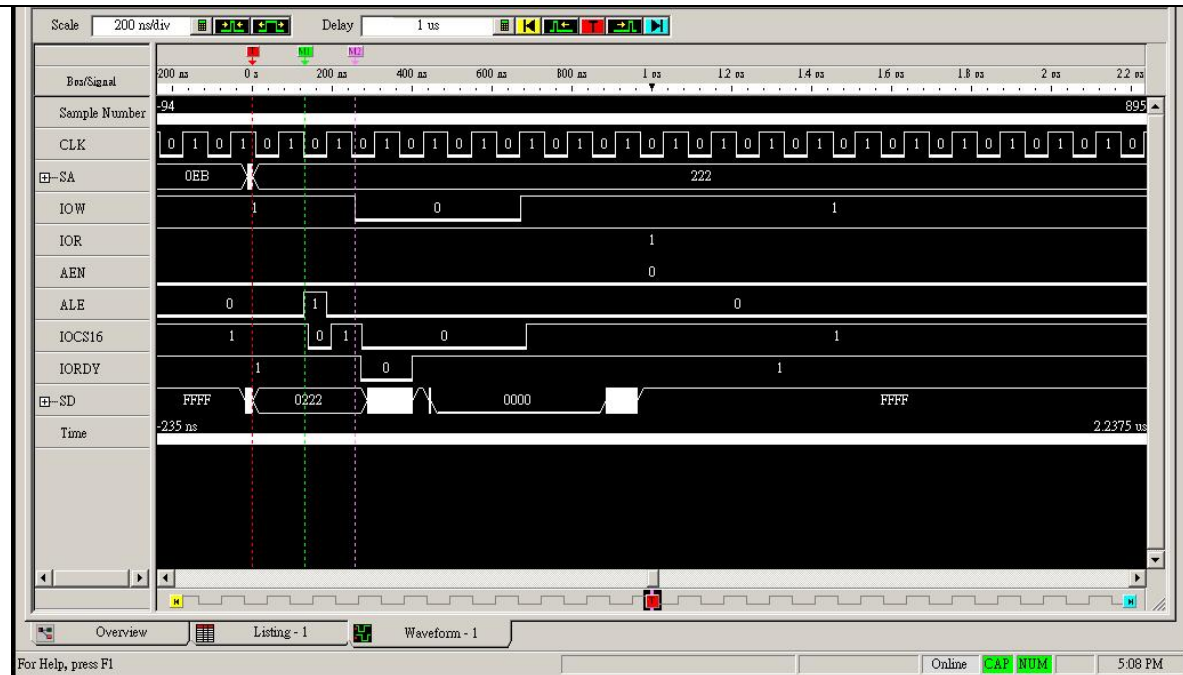
Trigger 條件 SA=0X200

輸出命令 outport(0x200,0x1172);



Trigger 條件 SA=0X222

輸出命令 `inport(0x222);`



Trigger 條件 SA=0X222

輸出命令 `outport(0x222,0x1172);`

