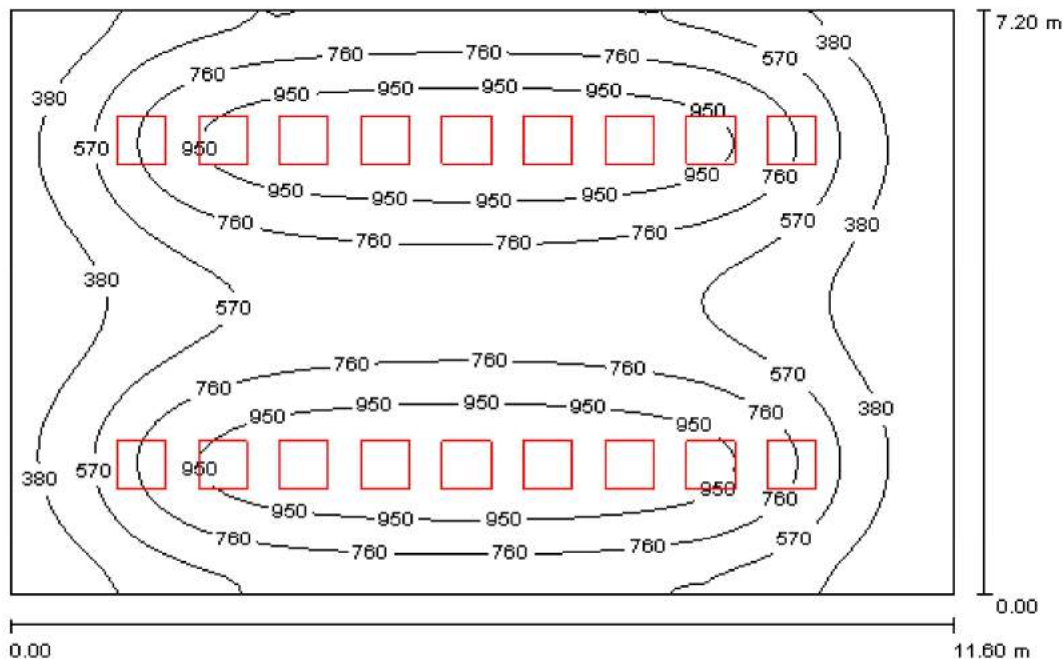


恒新數位科技

新竹縣竹北市中華路358號12樓

Operator  
Telephone  
Fax  
e-Mail

### 室內空間 1 / Summary



Height of Room: 2.700 m, Mounting Height: 2.700 m, Light loss factor: 1.00

Values in Lux, Scale 1:93

Surface	$\rho$ [%]	$E_{av}$ [lx]	$E_{min}$ [lx]	$E_{max}$ [lx]	$u0$
工作面	/	682	193	1127	0.284
地板	20	606	248	857	0.410
天花板	70	133	77	168	0.582
Walls (4)	50	299	94	538	/

**工作面:**

Height: 0.850 m  
Grid: 64 x 64 Points  
Boundary Zone: 0.000 m

**Luminaire Parts List**

No.	Pieces	Designation (Correction Factor)	$\Phi$ [lm]	P [W]
1	18	Prodigital Technology Crop. Panel Light 40W 6000K (1.000)	3295	40.0
Total:			59315	720.0

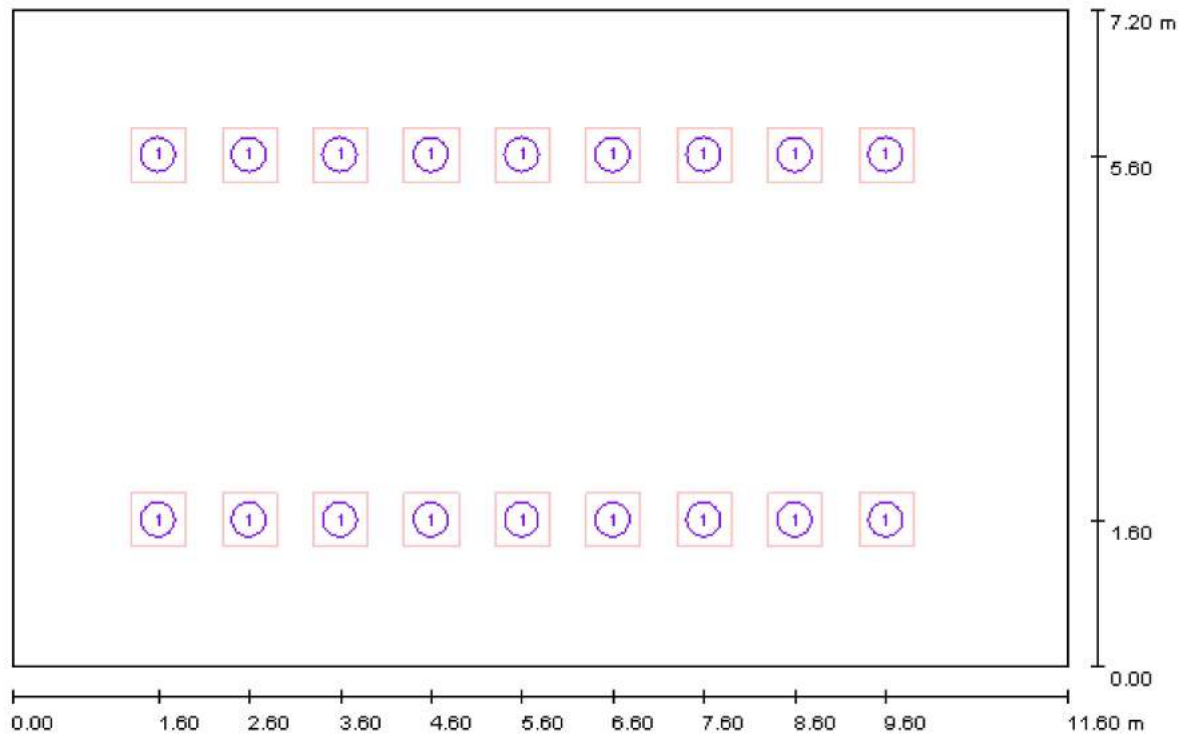
Specific connected load:  $8.62 \text{ W/m}^2 = 1.26 \text{ W/m}^2/100 \text{ lx}$  (Ground area:  $83.52 \text{ m}^2$ )

恒新數位科技

新竹縣竹北市中華路358號12樓

Operator  
Telephone  
Fax  
e-Mail

### 室內空間 1 / Luminaires (layout plan)



Scale 1 : 83

#### Luminaire Parts List

No.	Pieces	Designation
1	18	Prodigital Technology Corp. Panel Light 40W 6000K

項目 1

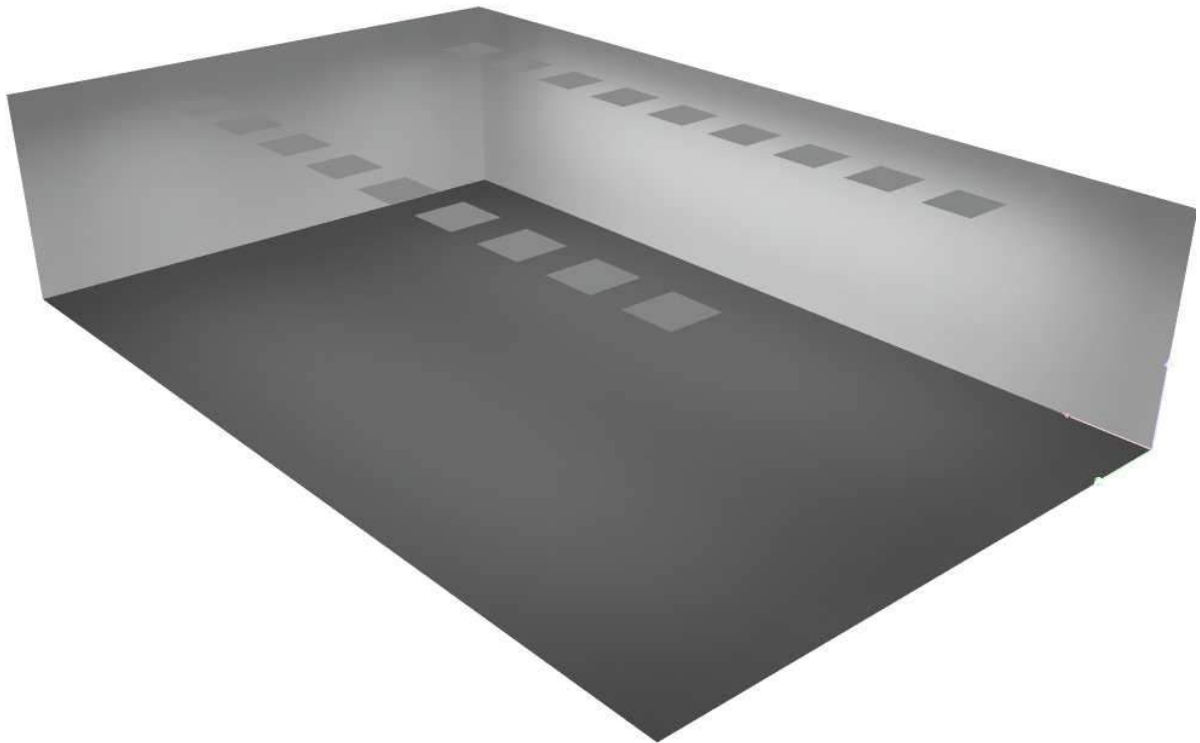


恒新數位科技

新竹縣竹北市中華路358號12樓

Operator  
Telephone  
Fax  
e-Mail

## 室內空間 1 / 3D Rendering



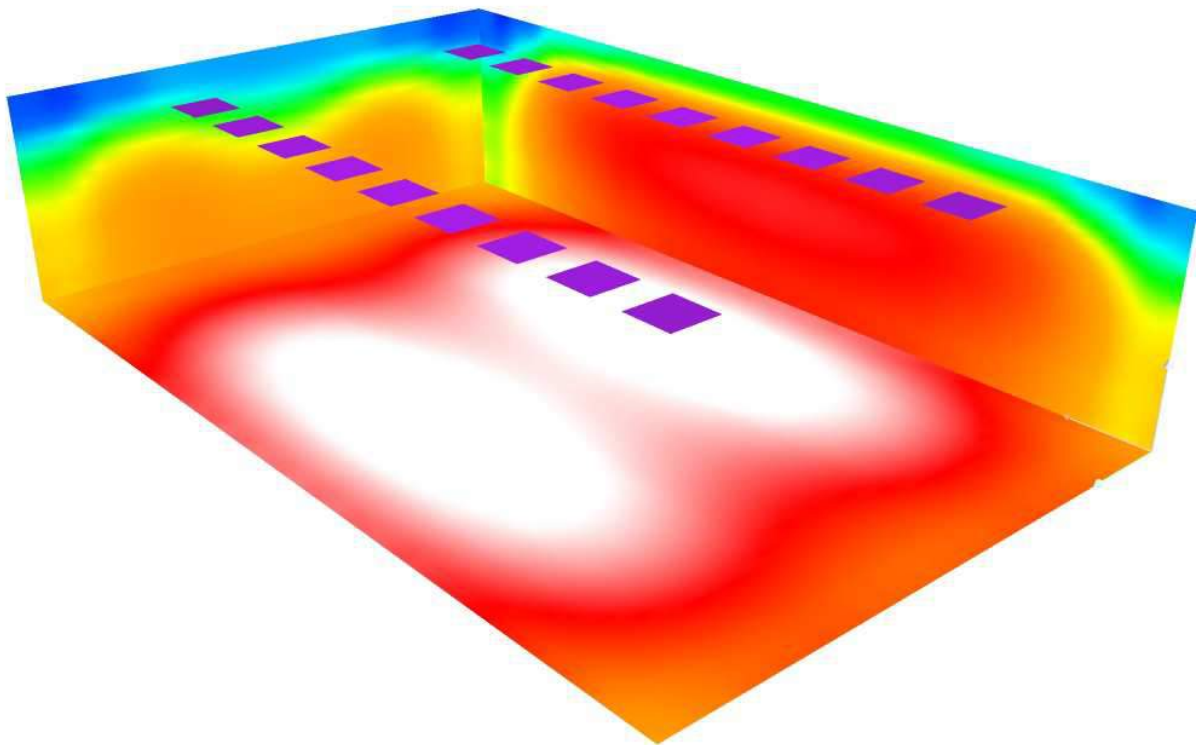


恒新數位科技

新竹縣竹北市中華路358號12樓

Operator  
Telephone  
Fax  
e-Mail

### 室內空間 1 / False Color Rendering



0      43.75      87.50      131.25      175      218.75      262.50      500      750

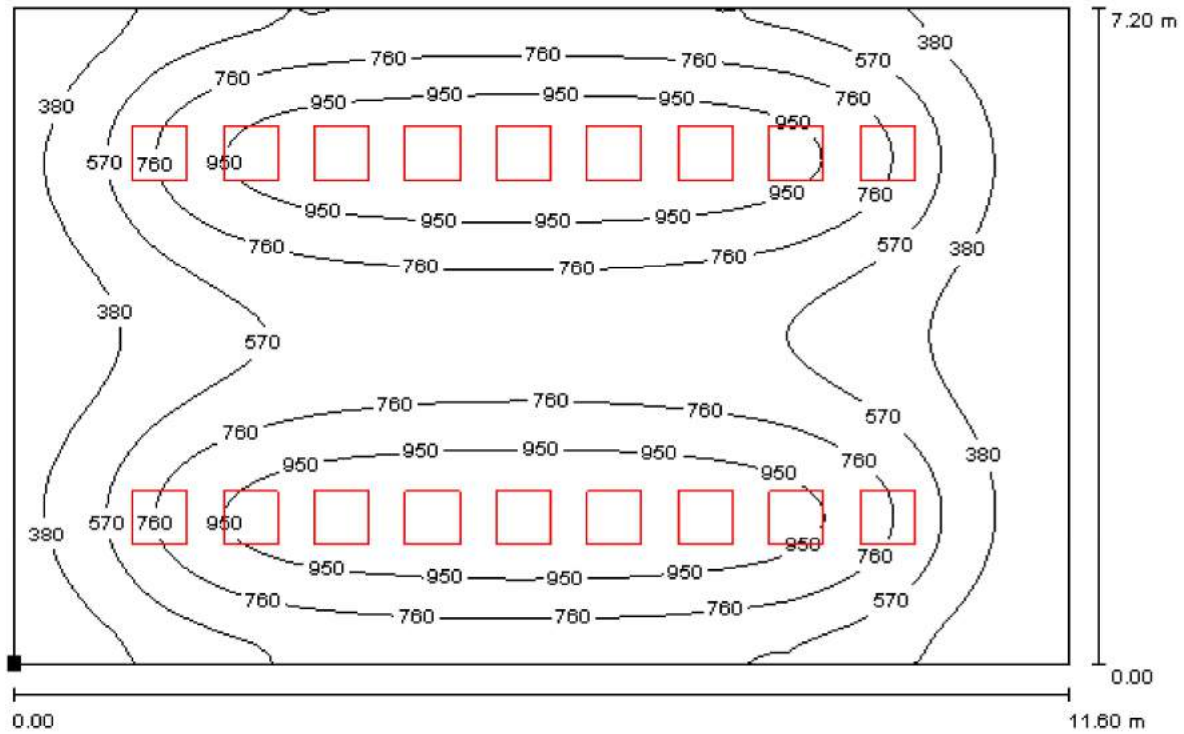
lx

恒新數位科技

新竹縣竹北市中華路358號12樓

Operator  
Telephone  
Fax  
e-Mail

室內空間 1 / 工作面 / Isolines (E)



Values in Lux, Scale 1 : 83

Position of surface in room:  
Marked point:  
(0.000 m, 0.000 m, 0.850 m)



Grid: 64 x 64 Points

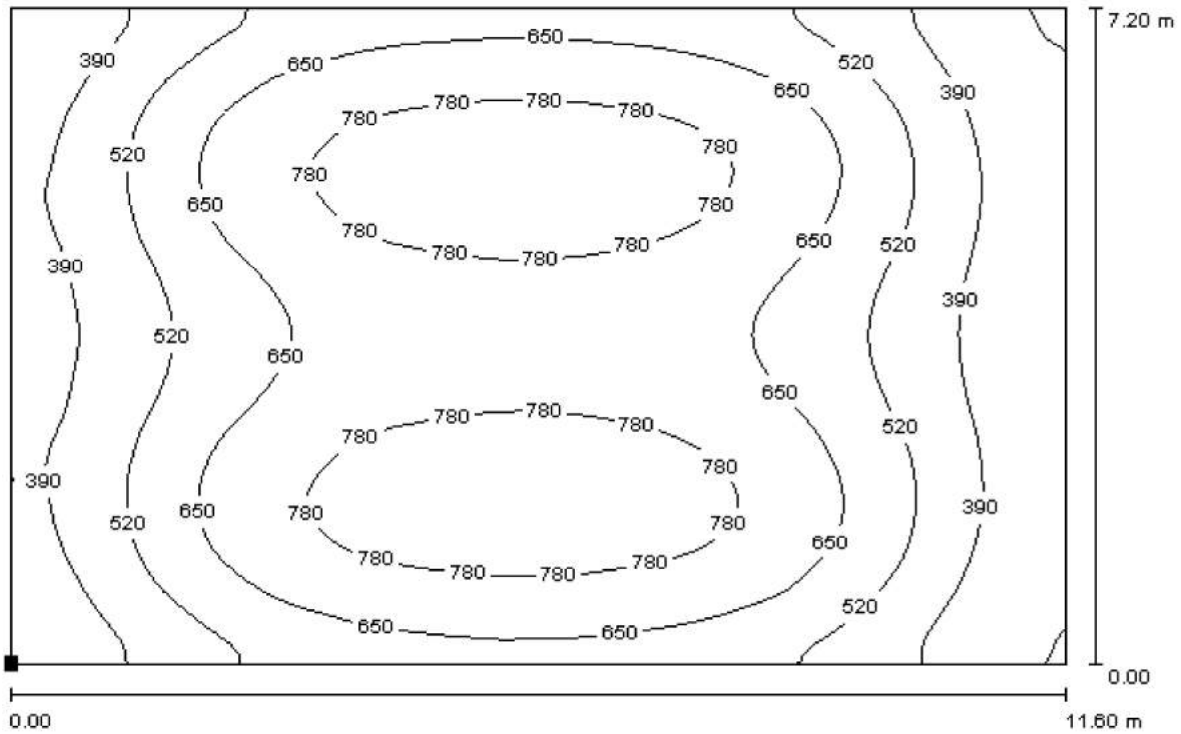
$E_{av}$ [lx]	$E_{min}$ [lx]	$E_{max}$ [lx]	$u_0$	$E_{min} / E_{max}$
682	193	1127	0.284	0.172

恒新數位科技

新竹縣竹北市中華路358號12樓

Operator  
Telephone  
Fax  
e-Mail

### 室內空間 1 / 地板 / Isolines (E)



Values in Lux, Scale 1 : 83

Position of surface in room:  
Marked point:  
(0.000 m, 0.000 m, 0.000 m)



Grid: 64 x 64 Points

$E_{av}$  [lx]  
606

$E_{min}$  [lx]  
248

$E_{max}$  [lx]  
857

$u_0$   
0.410

$E_{min} / E_{max}$   
0.290