



L
O
S
T

Fall / Winter 2014 / 2015
One year fashion design
Lin Jia-yi



Collage these lost piece of fabrics.
Connect them and create new sense.
They are promising.
These tracings will bring us many new clues.





Lost

Winter / Fall 2014/2015

Color Chart

Fall



Pantone 3945C



Pantone 2736C

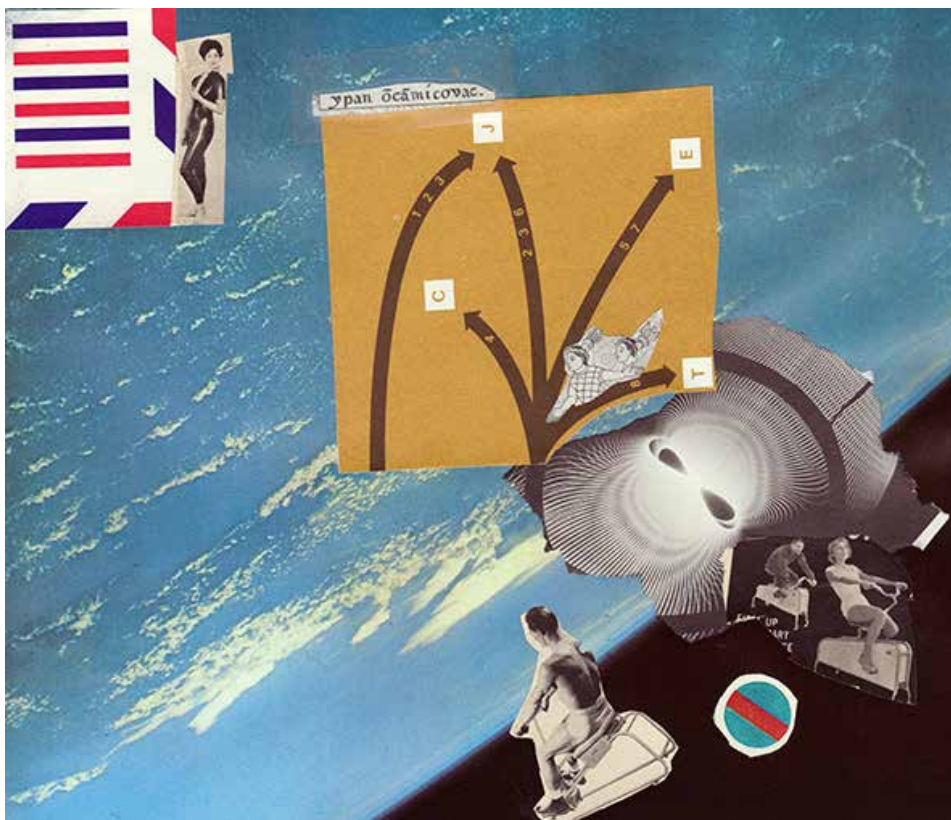


Pantone 663C



Pantone 7541C

Winter



Pantone 7557C



Pantone 401C



Pantone black 6C



Pantone 5415C



Pantone black 5C



P01 [POLYESTER]



BLACK 6C



7557C



401C



5415C



P02 [PLAIN COLOURS]



BLACK 5C



P03 [DOUBLEFACE]



3945C



7541C



2736C



663C



PE1 [PELLE]



7557C



BLACK 6C



C01 [MOLESKIN]



2736C



7541C



663C



3945C



SE1 [ORGANZA]



663C

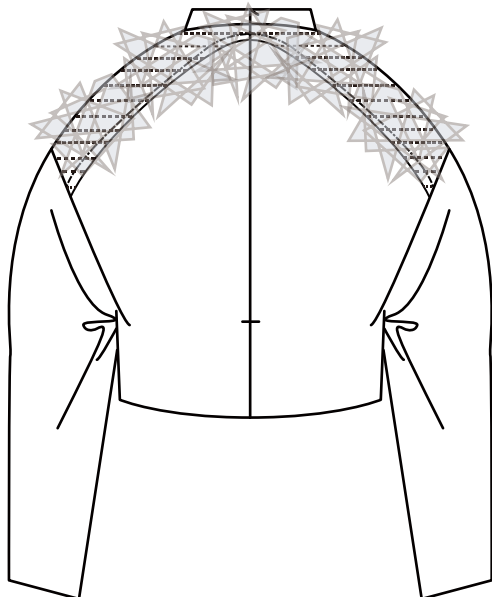
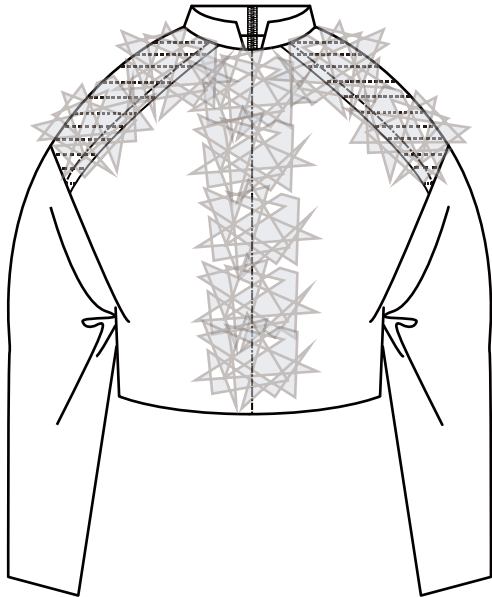
Lost

Winter / Fall 2014/2015

Trimming Chart

TR_01



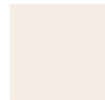


Fabrics



SE1 [ORGANZA]

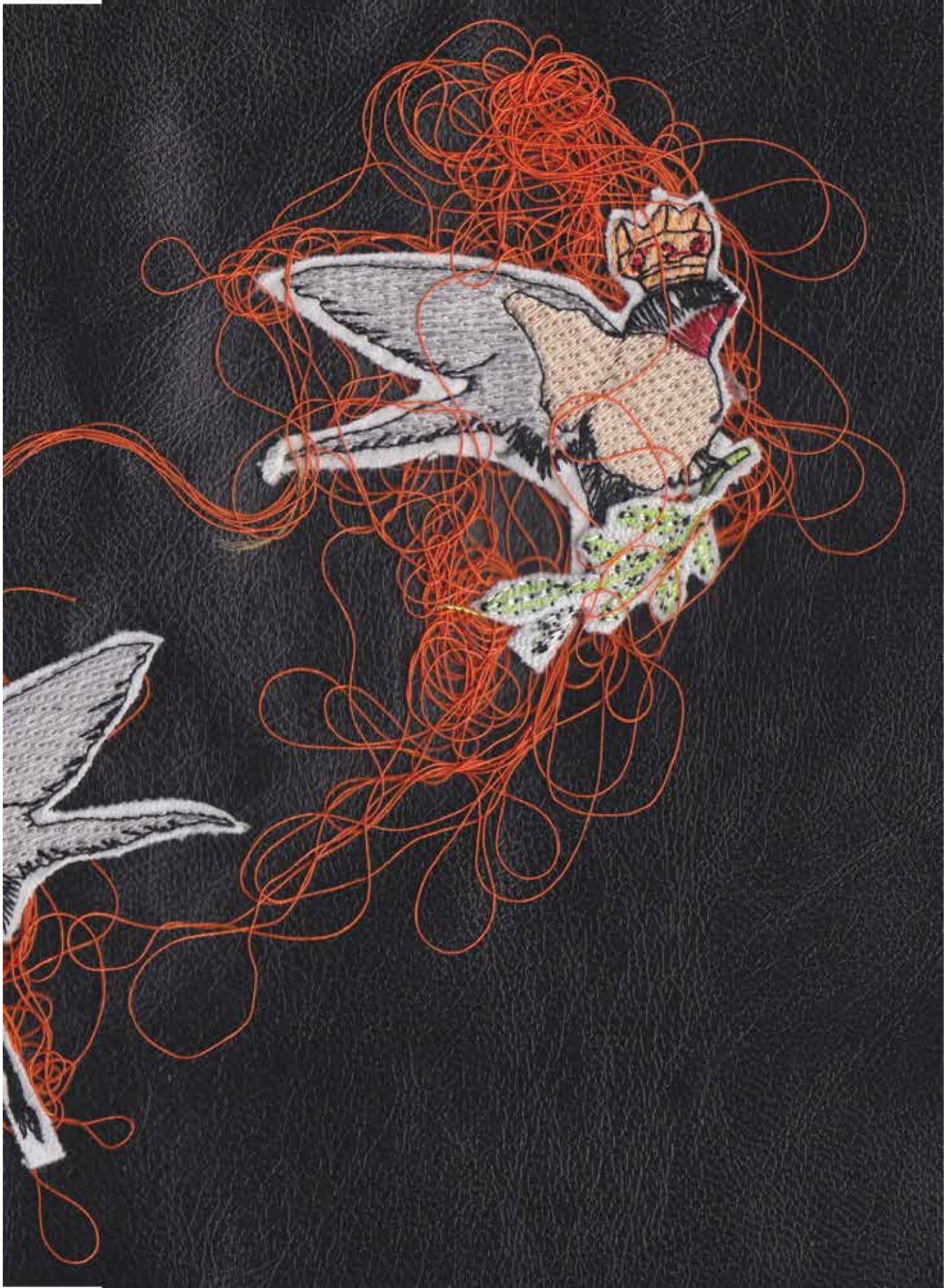
Colors

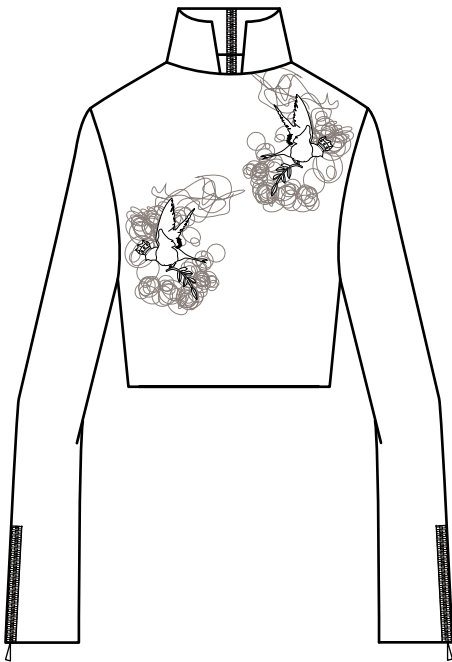


663C

Description

Iron organza into a new shape then put some stitches on it.





Fabrics



PE1 [PELLE]

Colors



BLACK 6C

Description

Take two pieces embroidered clothes on the threads then stich on the leather.





Fabrics



P01 [POLYESTER]



Lost

Winter / Fall 2014/2015

Outfit 1
Winter Group



Lost

Winter / Fall 2014/2015

Outfit 2
Winter Group



Lost

Winter / Fall 2014/2015

Outfit 3
Winter Group



Lost

Winter / Fall 2014/2015

Outfit 4
Winter Group



Lost

Winter / Fall 2014/2015

Outfit 5
Winter Group



Lost

Winter / Fall 2014/2015

Outfit 6
Winter Group



Lost

Winter / Fall 2014/2015

Outfit 1
Fall Group



Lost

Winter / Fall 2014/2015

Outfit 2
Fall Group



Lost

Winter / Fall 2014/2015

Outfit 3
Fall Group



Lost

Winter / Fall 2014/2015

Outfit 4
Fall Group



Lost

Winter / Fall 2014/2015

Outfit 5
Fall Group

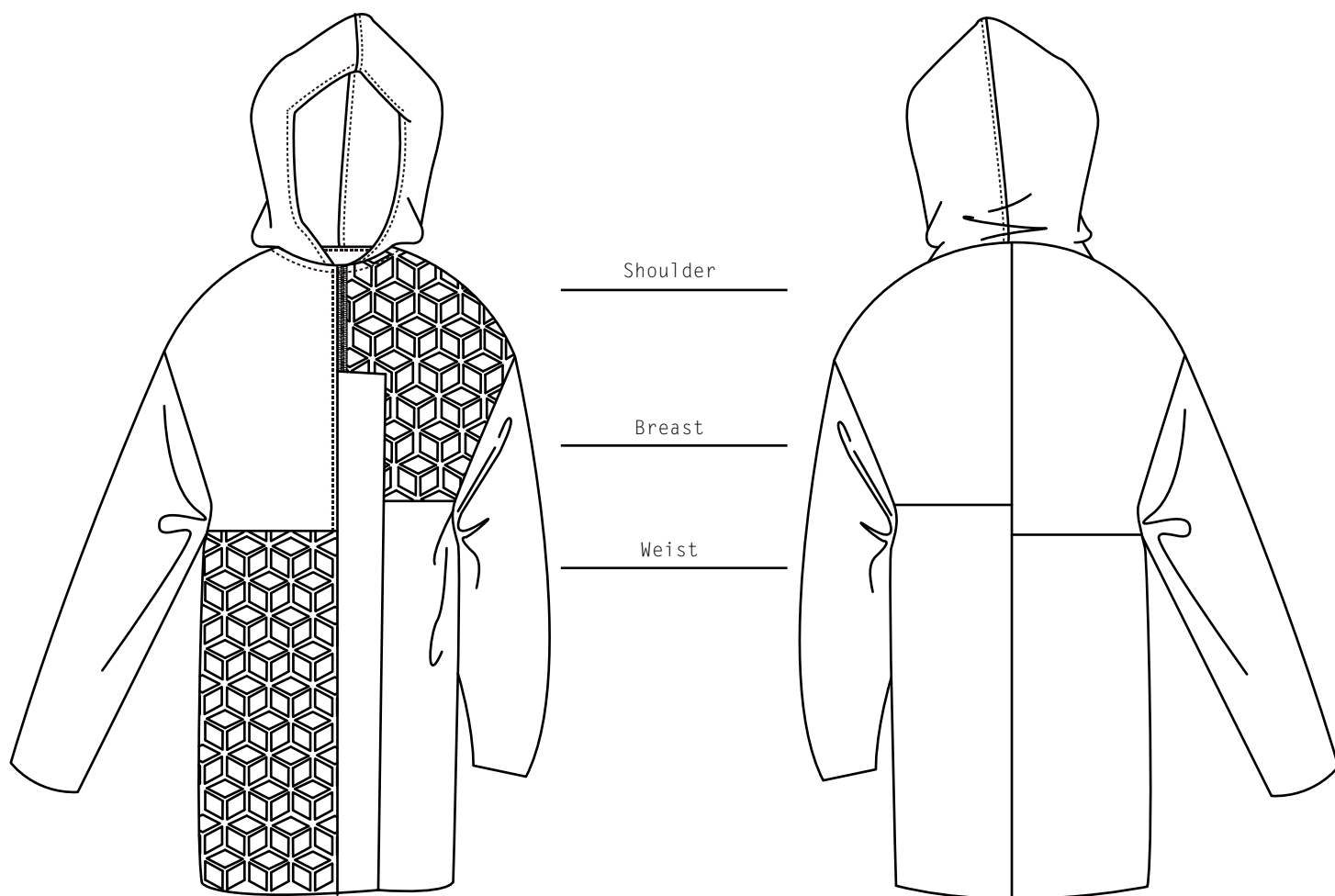


Lost

Winter / Fall 2014/2015

Outfit 6
Fall Group





Description

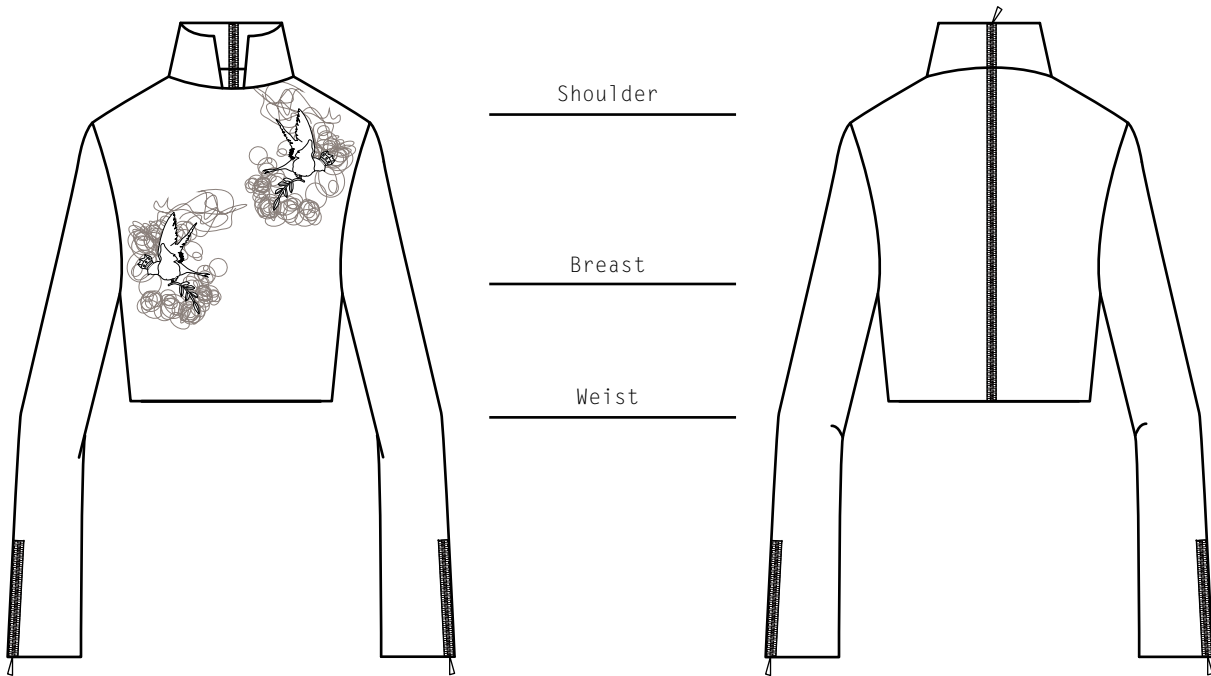
Collage two different fabrics in different size.
Cover zipper from the breast line.
Decorable stitching.
Invisible stitching handline.

Fabrics / Colors



P01 [POLYESTER]





Description

Take two pieces embroidered clothes on the threads then stitch on the front. Put the zipper on the back and cuff.
 Visible zipper on the sleeve.
 Invisible zipper on the back center.
 0.3 cm stitching around zipper.
 Invisible stitching handline.

Fabrics / Colors



PE1 [PELLE]



BLACK 6C



P02 [PLAIN COLOURS]



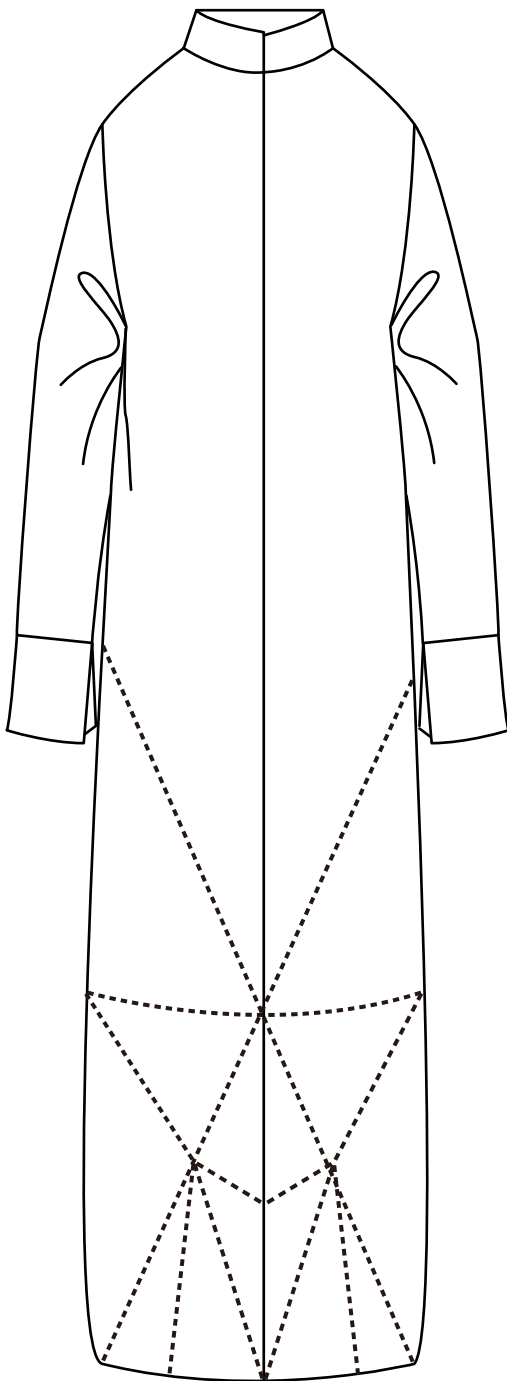
BLACK 5C

Trimming



TR_02





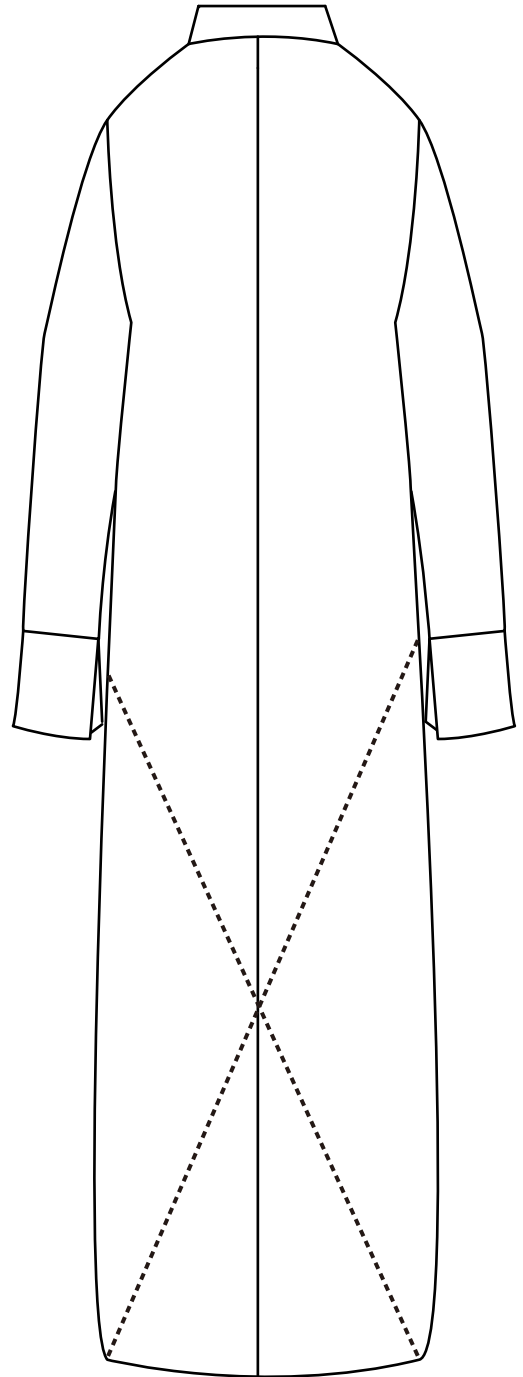
Shoulder



Breast



Weist



Description

Oversize coat. Length of coat is between knee and ankle.
5 button under front poening.
Invisible stitching handline.

Fabrics / Colors



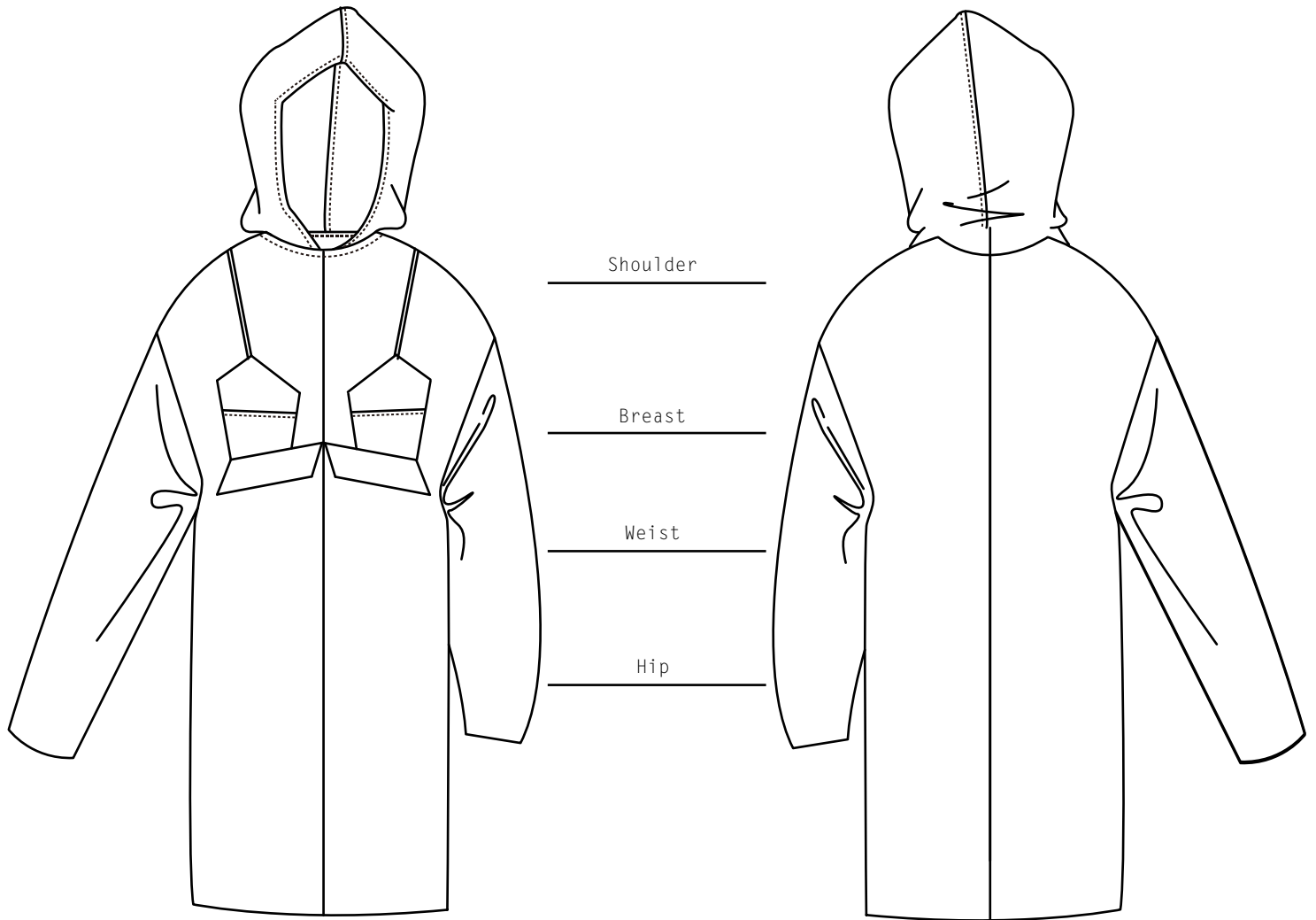
P01 [POLYESTER]



401C

Print



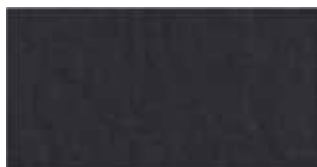


Description

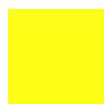
Oversize and long length sweatshirt. Collage different colors fabrics to create the shape of underwear.
Invisible stitching handline/Sleeve handline.
0.8 cm stitching collar/hood/front.



Fabrics / Colors



P03 [DOUBLEFACE]



3945C



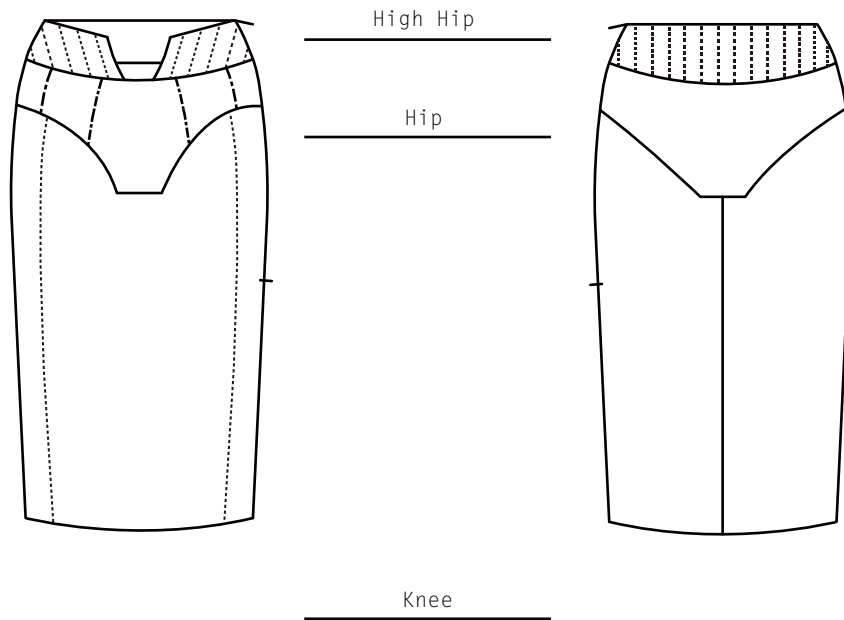
7541C



2736C



663C



Description

A pencil skirt with higher waistband. Collage different colors of the fabrics to create the shape of underwear.
60 cm invisible zipper on the side.

Fabrics / Colors



C01 [MOLESKIN]



3945C

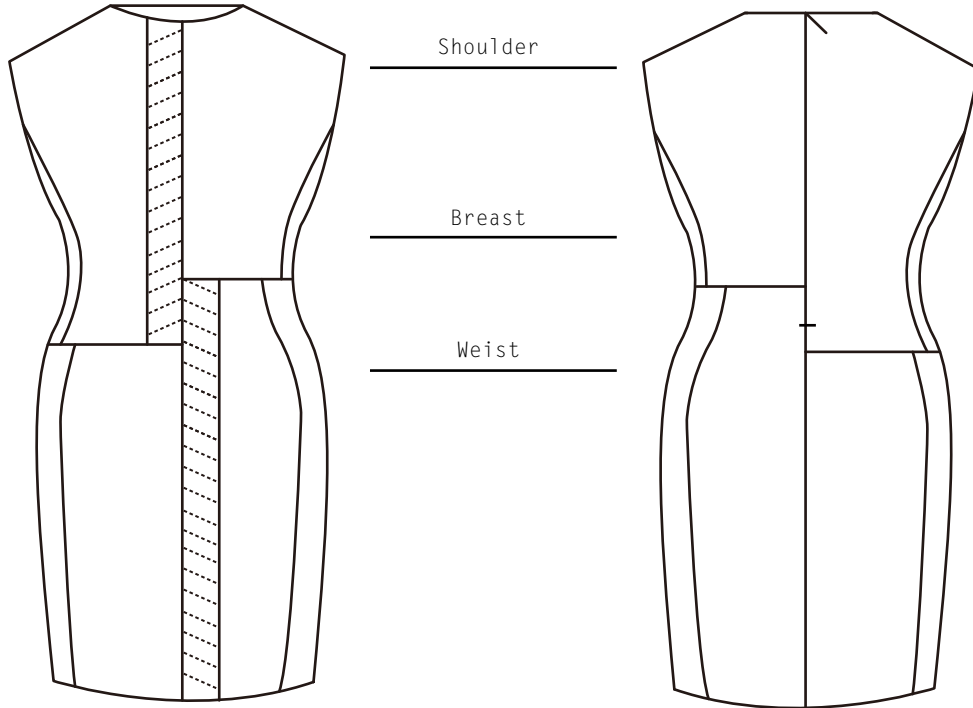


7541C



2736C

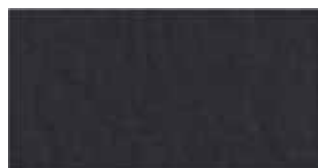




Description

A sheath with wider shoulder. Collage two different colors fabrics in different size.
Decorable stitching.
Invisible zipper 50cm on the back.
Invisible stitching handline.

Fabrics / Colors



P03 [DOUBLEFACE]

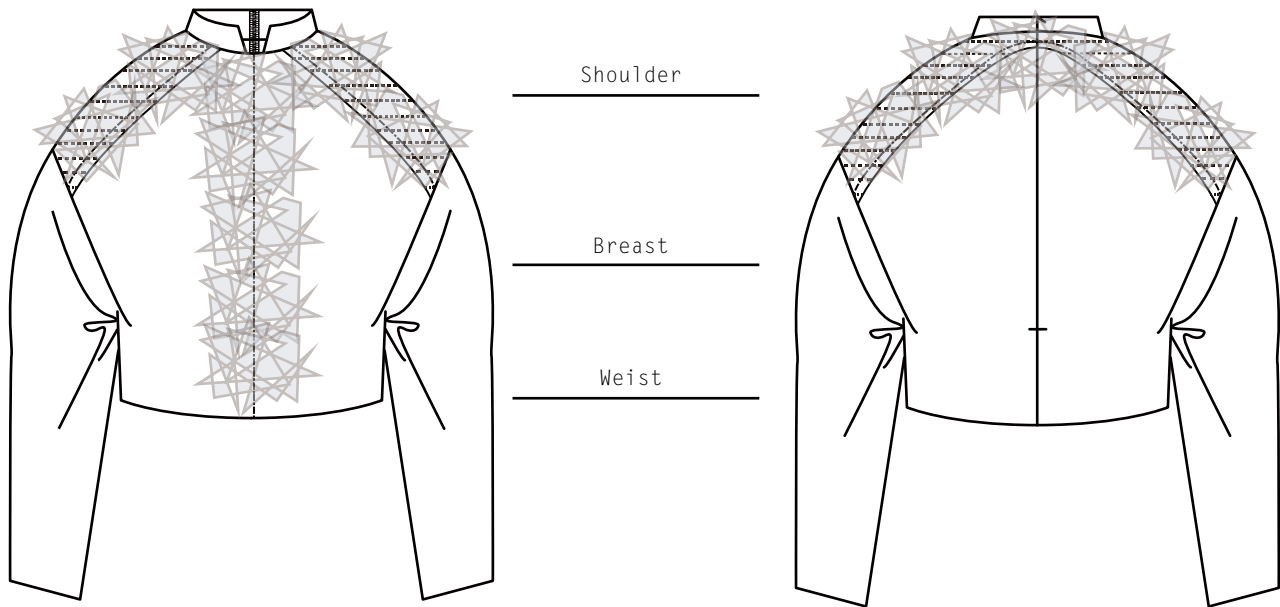


3945C



7541C





Description

Oversized shirt with shorter length. Overlap organza. Organza should be ironed into a new shape then put some stitches on it. Invisible stitching handline / sleeve. 60cm invisible zipper on the back center.

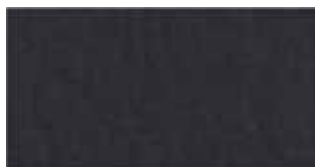
Trimming



TR_01



Fabrics / Colors



P03 [DOUBLEFACE]



7541C



2736C



C01 [MOLESKIN]



2736C



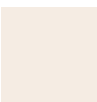
7541C



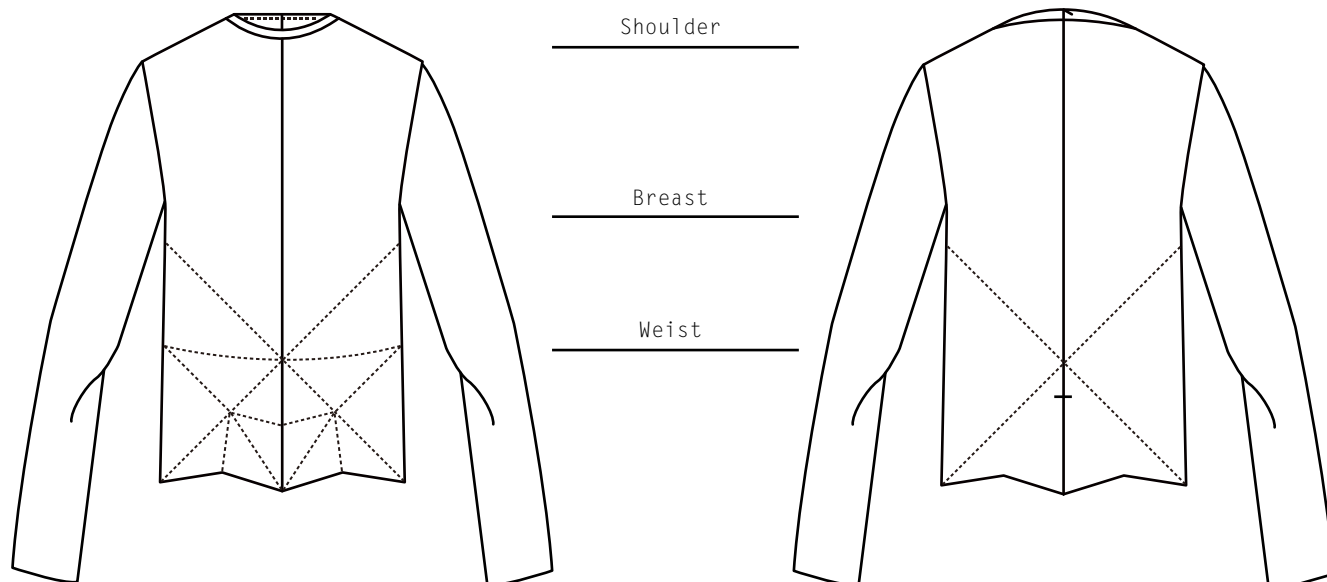
3945C



SE1 [ORGANZA]



663C



Description

Single color top. Use stitch to create some lines on the bottom.
 Invisible stitching handline/sleeve handline.
 60 cm invisible zipper on the back center.

Fabrics / Colors



C01 [MOLESKIN]



7541C



Lost

Winter / Fall 2014/2015

Catwalk Row
Fall Group



Lost

Winter / Fall 2014/2015

Catwalk Row
Winter Group

