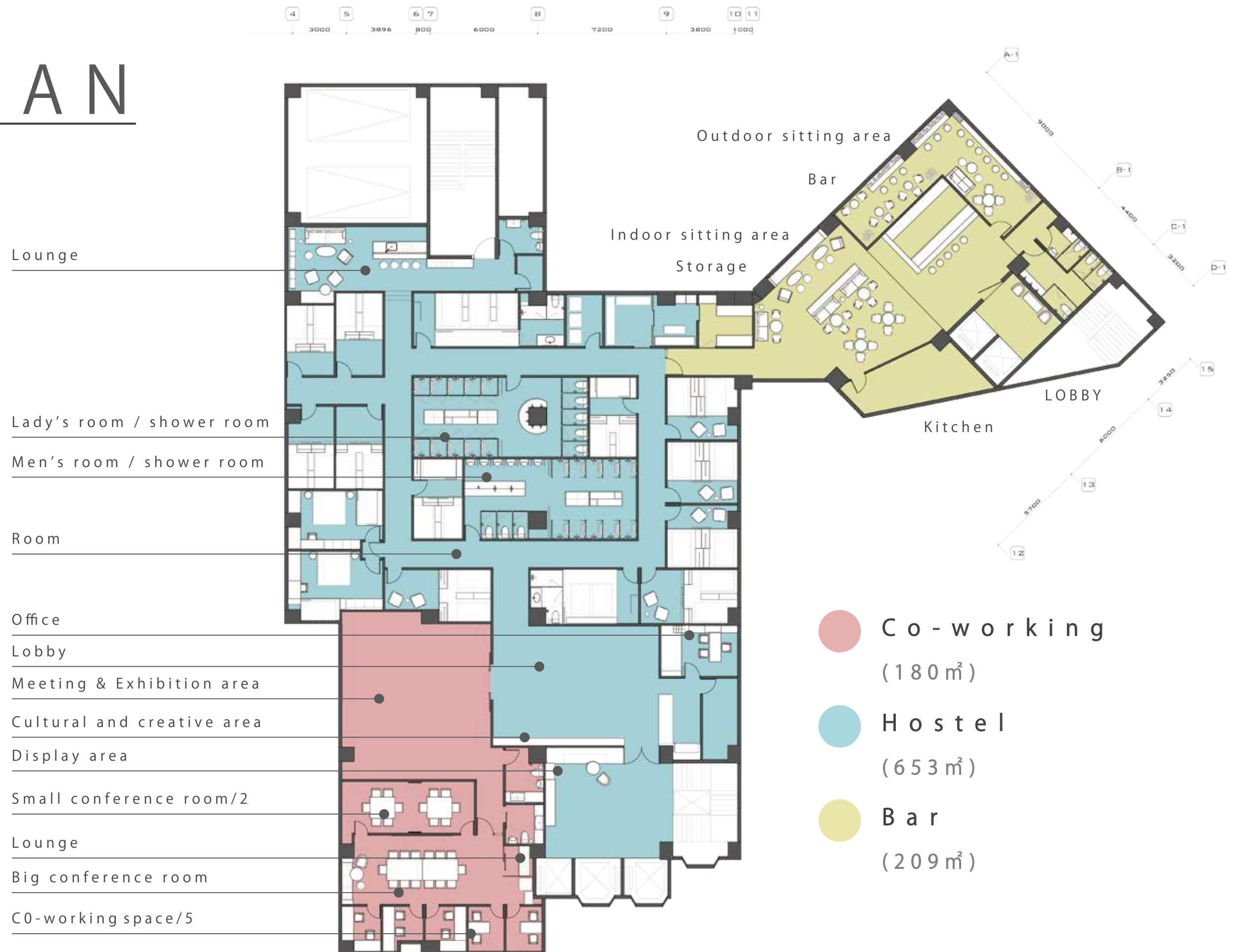


L I F E 8

PLAN



DETAIL



聖筊(one side flat, the other convex):
If you see this, great!
The deity has agreed with your request.

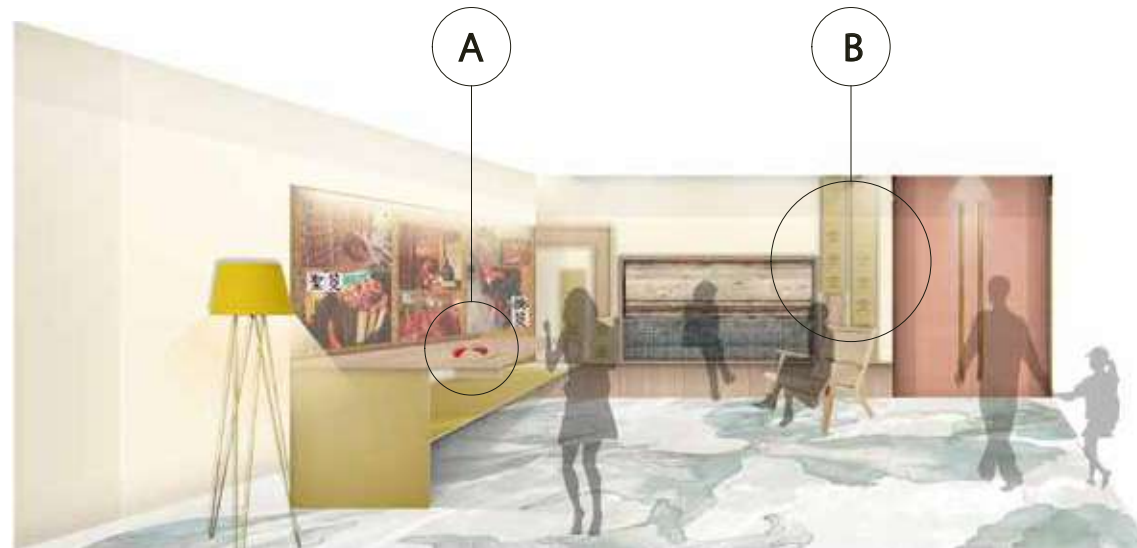


笑筊 (two convex):
The deity is laughing, meaning it has not yet
decided or your request is unclear; you must
clarify your request and ask again.



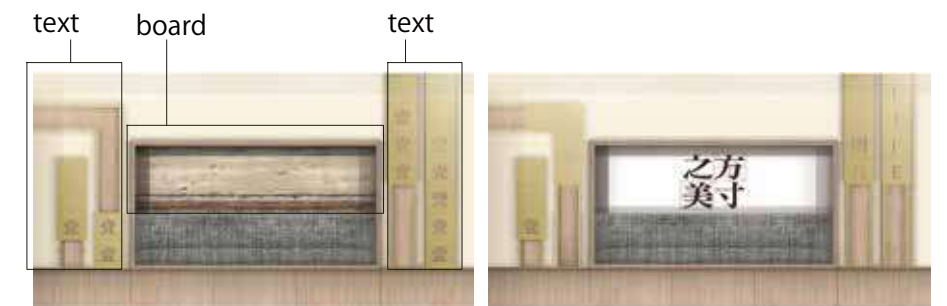
陰筊(both sides flat):
The deity has denied your request.

A

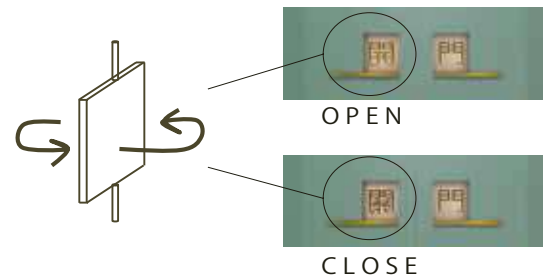


Entrance

B

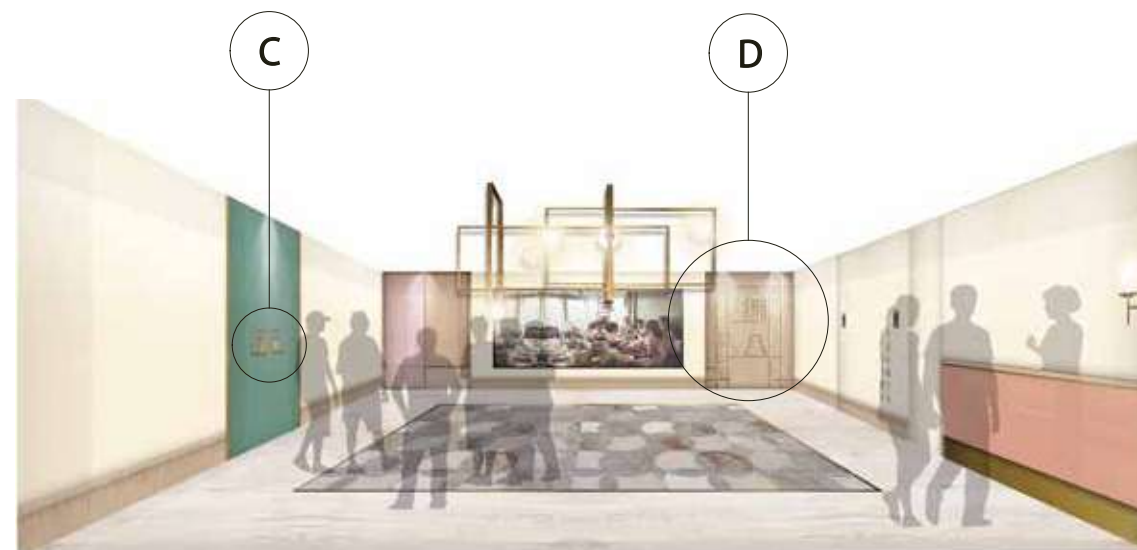


Our text can be arranged and carved for exhibition features to
present any possible sentences created by the carved blocks.
The board pictured above will be used as a notice board for posters.



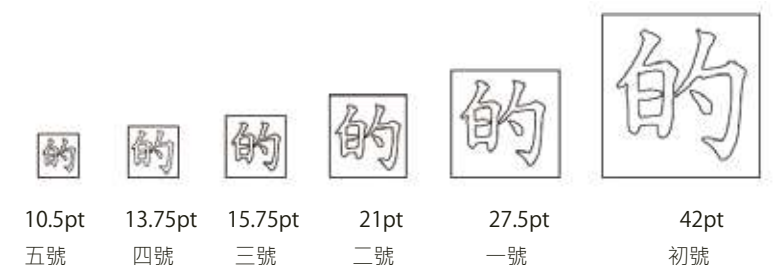
By opening or closing the door the characters on the
door change according to which direction you are
entering or leaving.

C



Lobby

D



Traditional letterpress sizes were measured in Hào (號).
Modern letterpress block sizes are measured in PT.



Cultural and creative area

There will be regular exhibits of works from Chiayi artists.
Through exhibitions of artistic works we will come to better
understand Chiayi.

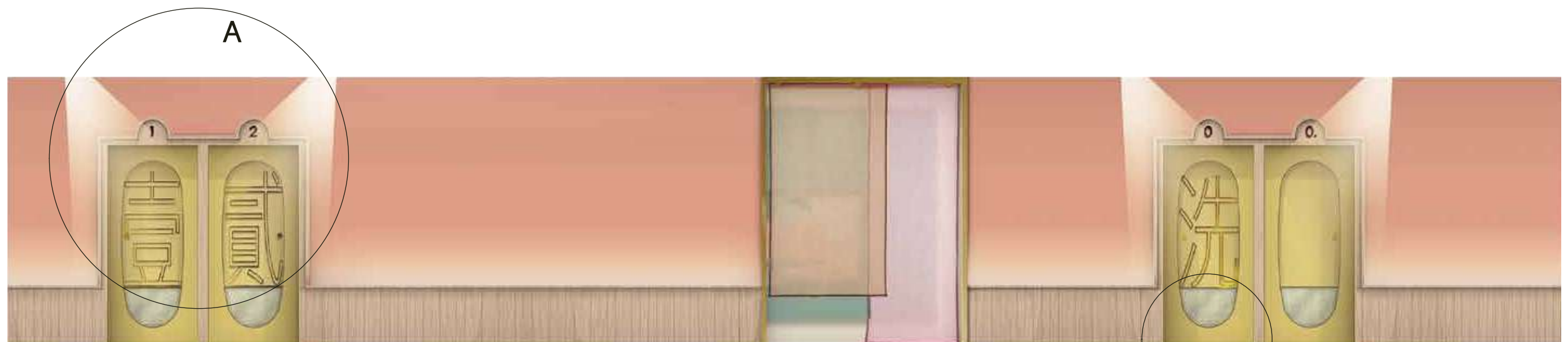


Chiayi Beigang Town artist- Cai Yongwu.
Careful observations of a monkey's every move allows Cai Yongwu
to truly represent the image of a monkey.

PLAN

ROOM

- 耕
(4 bed room/6 bed room)
- 漁
(4 bed room)
- 樵
(3 bed room)
- 讀
(2 bed room/6 bed room)



Room Number

Letterpress printing will be used to create each Chinese character on LIFE8 doors.
For foreign customers, numbers are provided above each door for guidance.



Plum Blossom

Cross

B

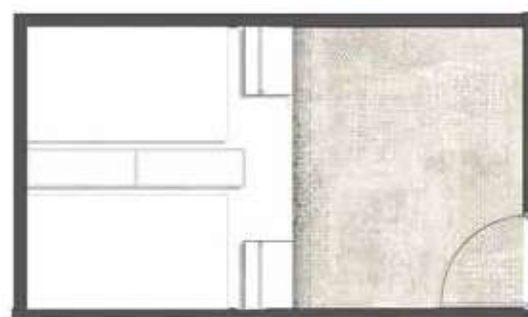
Chinese Traditional Stained Glass

This rugged pattern is a shared memory of the Taiwanese people. Its opaque translucency allows for privacy, and light to flow in and out of the room.

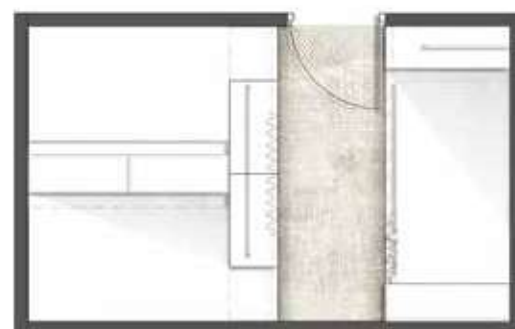
TYPE

耕

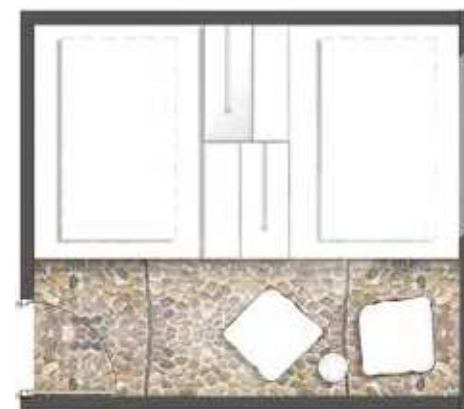
— Standard room
嘉南大圳，糖米盛世



Bunk Bed, 4 bed room



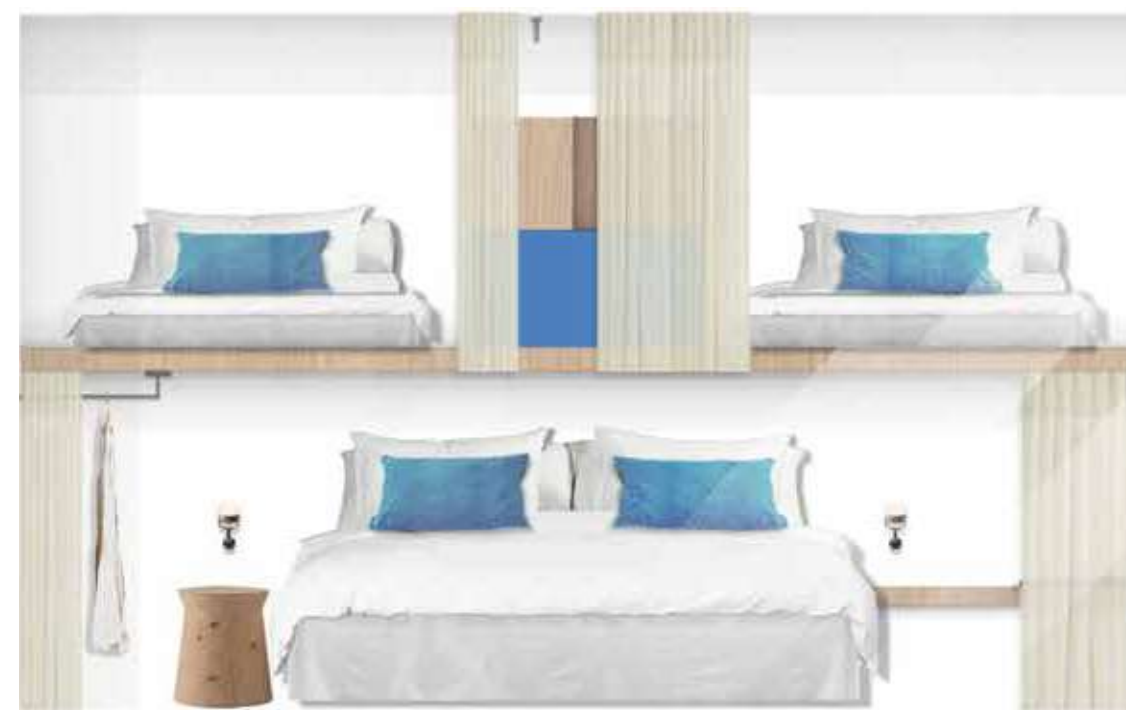
Bunk Bed, 6 bed room



Bunk Bed, 4 bed room

— Executive Suite
鹽花蚵仔，海洋贈禮

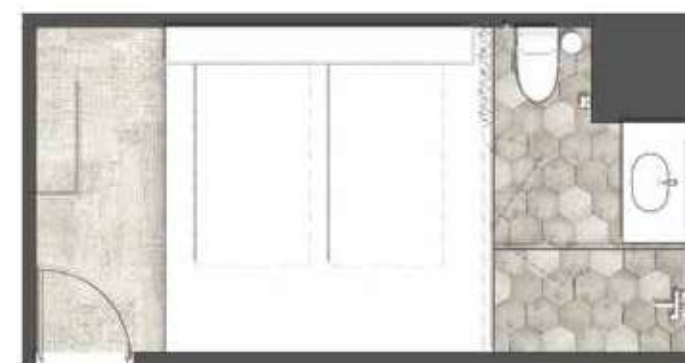
漁



TYPE



4 bed room



2 bed room



樵

— Deluxe Suite

阿里山林業，檜町



讀

— Dormitory Room

傳統技藝，以人為本



PLAN

BAR

Multiculturalism and Temple Culture

Folk performing arts in Taiwan are not performed in theaters and great halls but in a temple court located in front of the main temple.

The performance of folk arts in the temple makes this place an important area for local culture.

Surrounding the temple are many kinds of shops: including food stalls and sellers of products for use inside the temple. This mix of stalls makes the temple area a thriving local business center.

The temple court is usually a place for neighbors to gather. They play chess, children play games, community discussions of social and public affairs all occur. This also makes the temple court a place for locals to catch up on the latest news.

Life 8 Bar

As we have seen, the Temple Court has multiple uses in daily life. This is the same concept we have used for LIFE 8 Bar.

LIFE 8 Bar will connect Chiayi people to promote friendship between all, deliver new ideas and add traditional ideas to create a new lifestyle. Through this Chiayi's nightlife will also be transformed to become vibrant and rich.



T Y P E



A

子曰：「禮云禮云，玉帛云哉？」

Confucius said: as long as something involves "ceremony", then alcohol is never far away.

Drinking is part of ceremony, the taste and excitement that wine brings uplifts people. In another saying Confucius says "Drinking is polite, there must be wine in etiquette" meaning there is a balance to be found with drinking as in with everything.

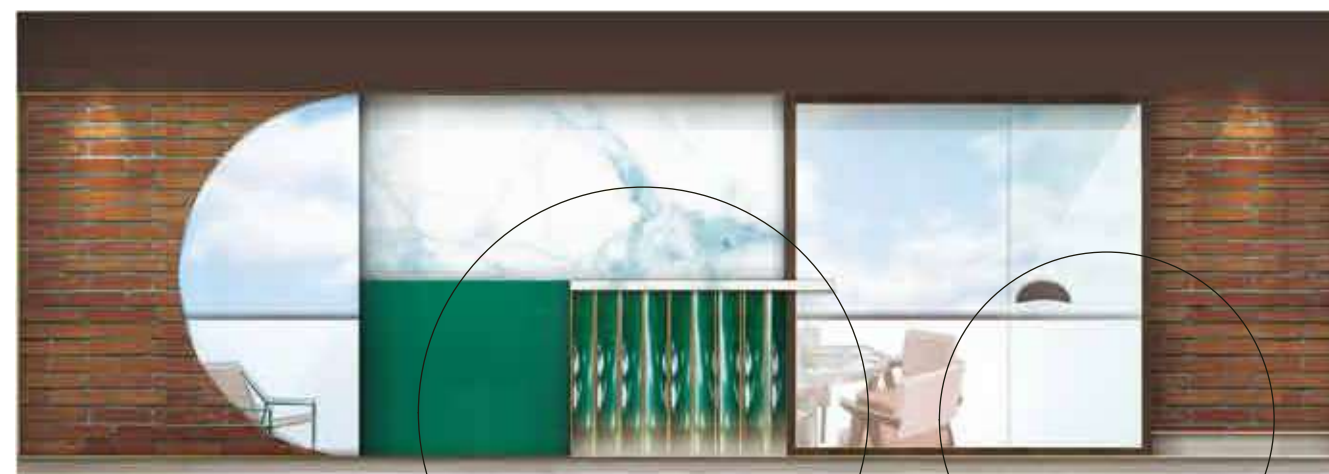
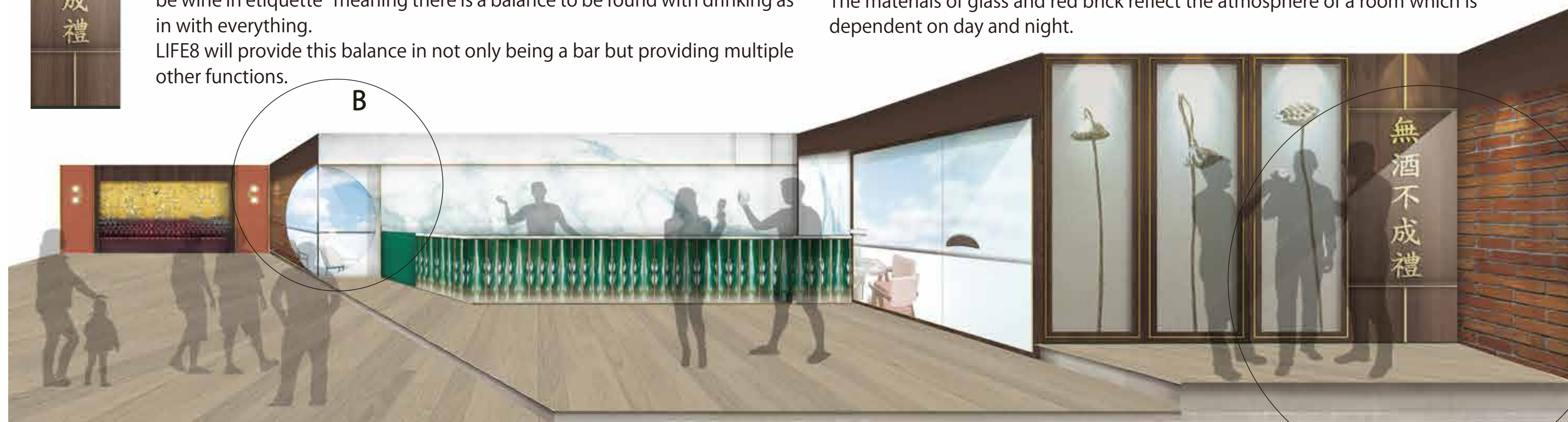
LIFE8 will provide this balance in not only being a bar but providing multiple other functions.

B

Two semi-circular glass panes are adjacent to the wall of the red brick. Semi-circular glass and red brick staggered lines represent LIFE8 Bar's aesthetic conflict.

The balance between illusion and reality.

The materials of glass and red brick reflect the atmosphere of a room which is dependent on day and night.



A

C

Jade, Jasper



Cochin ware, seen as emerald glaze, this combined with red brick adds the touch to bring this feature to life.

It is through this conflict of styles we see it's aesthetic beauty.

D

Door Handle

When grasping the moon block you gain the feeling of control over your destiny all the while knowing you are receiving the deity's blessing.

